

OPTICS

CATALOGUE

DÖRR

Dear Customer,

this catalogue shows you our fine selection of optical products. They are designed to provide you with more pleasure with your hobbies and optimum support at work. We have widened our range of quality binoculars and also offer a great choice of spotting scopes, laser range finders and night vision optics for a multitude of applications.

Simply browse through this catalogue and have fun with the selection of your new optical device! Our products are available in specializing retail shops. The DÖRR team highly appreciates your feedback.

BINOCULARS

BUSSARD I	Roof Prism & Pocket Binocular Series	04
WILDVIEW	Roof Prism Binocular Series	08
MILAN XP	Roof Prism Binocular Series	10
PACO	Roof Prism Binoculars	12
RAIN FOREST II	Pocket Binoculars	13
PRO LUX	Pocket Binoculars	14
WOLF	Pocket Binoculars	14
DANUBIA 40	Pocket Binoculars	15
ALPINA LX	Porro Prism Binocular Series	16
ALPINA PRO ZOOM	Zoom Binoculars	18
HIGH PERFORMANCE	Zoom Binoculars	19
	Opera & Theatre Binoculars	20
	Tripods & Adapters for Binoculars	21

NIGHT VISION

Digital Night Vision Binoculars	22
Night Vision Recording	24
Night Vision Monoculars & Binoculars	25

RANGE FINDERS

DJE-400, DJE-600	Laser Range Finders	28
------------------	---------------------	----

SPOTTING SCOPES

RAIN FOREST	Pocket Monocular, Pocket Telescope	30
	Zoom Spotting Scope Series	32
	Spotting Scope Photo Adapter, Eyepieces, Tripods	34
LUCHS, KAUZ, FUCHS, WOLF II	Zoom Spotting Scopes	37
	Magnifiers	41

ASTRO

Telescopes, Astro Accessories, Astro Photography	44
--	----

KEY TO SYMBOLS

 MULTI COATED

 PHASE COATED

 BAK-4 PRISMS

 BK7 PRISMS

 1/4" TRIPOD SOCKET

 ZOOM FUNCTION

 FOGGING FREE

 SPLASH WATER PROOF

 WATER PROOF

 COMMENTS & HINTS

 MADE IN JAPAN

1. Subject to change
2. Retail prices (MSRP) include 19% VAT
3. Printed colours may differ slightly from the actual colours
4. Product images are partly representative for other types



The Bussard I roof prism and pocket binoculars are designed to approach demanding users in the fields of sports, hunting and nature observation. Superior quality meets sportive design and well selected features to ensure the pure joy of observation.

Perfect handling with ABS rubber armour. Fast and soundless focusing with centre focus wheel. Experience exciting observations with breath taking viewing impressions, brilliant and of excellent sharpness and colour fidelity over the full field of view. Even at low visibility and dawn the view remains clear and bright. The extremely high light transmission is granted by the fully MC coated lenses and BAK-4 prisms as well as the non-reflective dielectric coating of the prisms.



MORE FEATURES

- Twist-up eye-cups for eye-glass wearers
- Large dioptre adjustment range -4/-8 dptrs
- Short close-focus range
- Nitrogen gas filling for fogging-free optics
- Function range from -5° to +60°C
- Water-pressure proof down to 1m
- 1/4" tripod socket



BUSSARD I 8x25 & 10x25

POCKET BINOCULAR

Compact and high performing pocket binoculars to go. Given the **light transmission > 80%** the binoculars are well-suited for nature observations, even under poor weather conditions.

Supplied with case, carrying strap and ocular lens caps.

BUSSARD I 8x25 & 10x25

Measurements: 100 x 110 x 35 mm; weight: 300 g



BUSSARD I 8x32 & 10x32

ROOF PRISM BINOCULAR

Lightweight and high performing! Handy binoculars with large field of view and **high light transmission > 87%**. Well-suited for bird and nature observations.

Supplied with case, carrying strap, ocular and objective lens caps.

BUSSARD I 8x32 & 10x32

Measurements: 125 x 110 x 45 mm; weight: 470 g

Type	Colour	Magnification	Lens-ø	Relative Brightness	Twilight Performance	Exit pupil	Field at 1000 m	Close Focus	Pupil Distance	Eye Relief	Item No	GTIN13	MSRP €
8x25		8x	25 mm	9,75	14,1	3,1 mm	119 m	1,5 m	50-73 mm	15,5 mm	533510	4000461079016	189,00
10x25		10x	25 mm	6,25	15,8	2,5 mm	96 m	1,5 m	50-73 mm	15,5 mm	533511	4000461079023	199,00
8x32		8x	32 mm	16	16	4,0 mm	131 m	1,5 m	50-73 mm	16,0 mm	533512	4000461079030	289,00
10x32		10x	32 mm	10	17,9	3,2 mm	96 m	1,5 m	50-73 mm	15,0 mm	533513	4000461079047	299,00

**SETS NEW
STANDARDS**



BUSSARD I 8x42 & 10x42

ROOF PRISM BINOCULAR

Extremely high light transmission > 87% – therefore perfectly suited for hunting and nature observation at dawn or in the dark. Supplied with case, carrying strap, ocular and objective lens caps.

BUSSARD I 8x42 & 10x42

Measurements: 140 x 130 x 53 mm; weight: 700 g



BUSSARD I 8x56 & 10x56

ROOF PRISM BINOCULAR

Large binoculars with **extremely high light transmission > 87%** – therefore perfectly suited for hunting and nature observation at dawn or in the dark. Supplied with case, carrying strap, ocular and objective lens caps.

BUSSARD I 8x56 & 10x56

Measurements: 180 x 145 x 60 mm; weight: 1200 g

Type	Colour	Magnification	Lens-ø	Relative Brightness	Twilight Performance	Exit pupil	Field at 1000 m	Close Focus	Pupil Distance	Eye Relief	Item No	GTIN13	MSRP €
8x42		8x	42 mm	27,5	18,3	5,3 mm	129 m	1,2 m	58-73 mm	18,0 mm	533514	4000461079054	329,00
10x42		10x	42 mm	17,65	20,5	4,2 mm	114 m	1,2 m	58-73 mm	15,0 mm	533515	4000461079061	349,00
8x56		8x	56 mm	49	21,2	7,0 mm	114 m	2,5 m	59-76 mm	23,0 mm	533516	4000461079078	478,00
10x56		10x	56 mm	31,36	23,7	5,6 mm	105 m	2,5 m	59-76 mm	18,5 mm	533517	4000461079085	498,00



SETS NEW
STANDARDS



BUSSARD I 8x25 & 10x25

POCKET BINOCULAR

Compact and high performing pocket binoculars to go. Given the **light transmission > 80%** the binoculars are well-suited for nature observations, even under poor weather conditions.

Supplied with case, carrying strap and ocular lens caps.

BUSSARD I 8x25 & 10x25

Measurements: 100 x 110 x 35 mm; weight: 300 g



BUSSARD I 8x32 & 10x32

ROOF PRISM BINOCULAR

Lightweight and high performing! Handy binoculars with large field of view and **high light transmission > 87%**. Well-suited for bird and nature observations.

Supplied with case, carrying strap, ocular and objective lens caps.

BUSSARD I 8x32 & 10x32

Measurements: 125 x 110 x 45 mm; weight: 470 g

Type	Colour	Magnification	Lens-ø	Relative Brightness	Twilight Performance	Exit pupil	Field at 1000 m	Close Focus	Pupil Distance	Eye Relief	Item No	GTIN13	MSRP €
8x25		8x	25 mm	9,75	14,1	3,1 mm	119 m	1,5 m	50-73 mm	15,5 mm	533520	4000461079177	189,00
10x25		10x	25 mm	6,25	15,8	2,5 mm	96 m	1,5 m	50-73 mm	15,5 mm	533521	4000461079184	199,00
8x32		8x	32 mm	16	16	4,0 mm	131 m	1,5 m	50-73 mm	16,0 mm	533522	4000461079191	289,00
10x32		10x	32 mm	10	17,9	3,2 mm	96 m	1,5 m	50-73 mm	15,0 mm	533523	4000461079207	299,00



BUSSARD I 8x42 & 10x42

ROOF PRISM BINOCULAR

Extremely high light transmission > 87% – therefore perfectly suited for hunting and nature observation at dawn or in the dark.
Supplied with case, carrying strap, ocular and objective lens caps.

BUSSARD I 8x42 & 10x42

Measurements: 140 x 130 x 53 mm; weight: 700 g







BUSSARD I 8x56 & 10x56

ROOF PRISM BINOCULAR

Large binoculars with extremely **high light transmission > 87%** – therefore perfectly suited for hunting and nature observation at dawn or in the dark.
Supplied with case, carrying strap, ocular and objective lens caps.

BUSSARD I 8x56 & 10x56

Measurements: 180 x 145 x 60 mm; weight: 1200 g

Type	Colour	Magnification	Lens-ø	Relative Brightness	Twilight Performance	Exit pupil	Field at 1000 m	Close Focus	Pupil Distance	Eye Relief	Item No	GTIN13	MSRP €
8x42		8x	42 mm	27,5	18,3	5,3 mm	129 m	1,2 m	58-73 mm	18,0 mm	533524	4000461079214	329,00
10x42		10x	42 mm	17,65	20,5	4,2 mm	114 m	1,2 m	58-73 mm	15,0 mm	533525	4000461079221	349,00
8x56		8x	56 mm	49	21,2	7,0 mm	114 m	2,5 m	59-76 mm	23,0 mm	533526	4000461079238	478,00
10x56		10x	56 mm	31,36	23,7	5,6 mm	105 m	2,5 m	59-76 mm	18,5 mm	533527	4000461079245	498,00



FOR EXCITING NATURE OBSERVATION



The WildView binocular series is designed at its optimum for comfortable and strain free nature observation for hunters.

The robust rubber armour provides a maximum grip. The handy centre focus wheel grants soundless and fast focusing of both lenses. High performing multicoated and phase-coated optics with BAK-4 prisms guarantee bright, brilliant and sharp images with rich contrasts as well as visible outlines even at low visibility and dawn.

MORE FEATURES

- Dioptre adjustment
- Twist-up eye-cups
- Fogging-free from -25° C to +40° C
- Water pressure proof down to 1,5 m
- Tripod socket
- Supplied with neck strap and Nylon carrying case



WILD VIEW 8x42 & 10x42 ROOF PRISM BINOCULAR

Compact binoculars of elegant design. They are perfect company for nature excursions and outdoor activities.

WILDVIEW 8x42 & 10x42

Measurements: 135 x 124 x 52 mm; weight: 600 g

Type	Colour	Magnification	Lens-ø	Relative Brightness	Twilight Performance	Exit pupil	Field at 1000 m	Close Focus	Pupil Distance	Eye Relief	Item No	GTIN13	MSRP €
8x42		8x	42 mm	27,6	18,3	5,2 mm	129 m	2 m	56-72 mm	11,4 mm	533436	4000461058561	169,00
10x42		10x	42 mm	16,8	20,4	4,1 mm	101 m	2 m	56-72 mm	11,4 mm	533438	4000461058578	179,00



WILD VIEW 8x42 & 10x42

ROOF PRISM BINOCULAR

Compact binoculars of elegant design. They are perfect company for nature excursions and outdoor activities.

WILDVIEW 8x42 & 10x42

Measurements: 135 x 124 x 52 mm; weight: 600 g

WILD VIEW 8x56 & 12x56

ROOF PRISM BINOCULAR

Ideal for hunters and nightly observations: their high relative brightness makes observations at dawn or at night a great experience.

WILDVIEW 8x56 & 12x56

Measurements: 172 x 148 x 64 mm; weight: 1080 g

Type	Colour	Magnification	Lens-ø	Relative Brightness	Twilight Performance	Exit pupil	Field at 1000 m	Close Focus	Pupil Distance	Eye Relief	Item No	GTIN13	MSRP €
8x42		8x	42 mm	27,6	18,3	5,2 mm	129 m	2 m	56-72 mm	11,4 mm	533437	4000461073588	169,00
10x42		10x	42 mm	16,8	20,4	4,1 mm	101 m	2 m	56-72 mm	11,4 mm	533439	4000461073595	179,00
8x56		8x	56 mm	49	21,2	7,0 mm	107 m	3 m	64-78 mm	15,5 mm	533440	4000461058042	289,00
12x56		12x	56 mm	22,1	25,9	4,7 mm	96 m	3 m	64-78 mm	15,5 mm	533442	4000461058059	299,00

The Milan XP roof prism binocular series offers a great choice of binocular sizes – great for manifold observations on the hunt or nature strolls. Classical, compact and ergonomically shaped design. The corrugated rubber armour makes the binoculars soundless, shockproof and handy independent of weather conditions. Fast and precise focusing for both sides is granted by the centre focus wheel.

The remarkably high light transmission of 78 % in combination with phase and multicoated optics and high-grade BAK-4 prisms achieve highest optical performance. For your observations, this means bright views of rich contrast and a high depth of field as well as natural colours even at low visibility. Long-eye relief ensures strain free observations.



MORE FEATURES

- Dioptre adjustment
- Fogging-free
- Water pressure proof down to 0,5 m due to Argon gas filling
- Twist-up eye-cups for eyeglass wearers
- 1/4" tripod socket
- Supplied with case and neck strap



MILAN XP 8x34
ROOF PRISM BINOCULAR

Measurements: 130 x 125 x 46 mm; weight: 460 g



MILAN XP 8x42 & 10x42
ROOF PRISM BINOCULAR

Measurements: 145 x 135 x 54 mm; weight: 670 g
Measurements: 145 x 135 x 54 mm; weight: 645 g

Type	Colour	Magnification	Lens-ø	Relative Brightness	Twilight Performance	Exit pupil	Field at 1000 m	Close Focus	Pupil Distance	Eye Relief	Item No	GTIN13	MSRP €
8x34		8x	34 mm	18,1	16,5	4,2 mm	124 m	3 m	56-76 mm	17,4 mm	533480	4000461088100	199,00
8x42		8x	42 mm	27,6	18,3	5,2 mm	125 m	2 m	56-76 mm	17,3 mm	533481	4000461088117	239,00
10x42		10x	42 mm	17,6	20,5	4,2 mm	106 m	2 m	56-76 mm	16,1 mm	533482	4000461088124	239,00

FOR HUNTING
AND NATURE STROLLS



MILAN XP 10x50 & 12x50
ROOF PRISM BINOCULAR

Measurements: 170 x 140 x 65 mm; weight: 875 g
Measurements: 170 x 140 x 65 mm; weight: 850 g



MILAN XP 8x56
ROOF PRISM BINOCULAR

Measurements: 168 x 148 x 68 mm; weight: 1020 g

Type	Colour	Magni- fication	Lens-ø	Relative Brightness	Twilight Performance	Exit pupil	Field at 1000 m	Close Focus	Pupil Distance	Eye Relief	Item No	GTIN13	MSRP €
10x50	●	10x	50 mm	25	22,4	5,0 mm	101 m	2,5 m	56-76 mm	17,0 mm	533483	4000461088131	289,00
12x50	●	12x	50 mm	17,4	24,5	4,1 mm	86 m	3 m	56-76 mm	16,0 mm	533484	4000461088148	289,00
8x56	●	8x	56 mm	49	21,1	7,0 mm	112 m	3 m	60-76 mm	19,8 mm	533485	4000461088155	329,00

PACO 8x42 & 10x42 ROOF PRISM BINOCULARS

Inexpensive binocular in a classical design. The robust black rubber armour and the splash water protection make the binocular handy and ready for your nature adventures – even for soundless animal observation. BK7 prisms and the multicoated optics ensure brilliant views of natural colours. Twist-up eye-cups and dioptre adjustment offer viewing comfort also for eyeglass wearers. The Paco binoculars are fitted with a tripod socket. Supplied with carrying strap and case.

PACO 8x42 & 10x42

Measurements: 152 x 130 x 53 mm; weight: 595 g

Measurements: 152 x 130 x 53 mm; weight: 615 g



Type	Colour	Magnification	Lens-ø	Relative Brightness	Twilight Performance	Exit pupil	Field at 1000 m	Close Focus	Pupil Distance	Eye Relief	Item No	GTIN13	MSRP €
8x42		8x	42 mm	27,56	18,33	4,0 mm	105 m	7 m	60-73 mm	13,7 mm	533500	4000461069871	109,90
10x42		10x	42 mm	17,64	20,49	4,2 mm	102 m	6 m	60-73 mm	13,7 mm	533501	4000461069888	109,90

RAIN FOREST II 8x25 & 10x25 POCKET BINOCULARS

Exclusive and sporty design packed with an optimum of practical features – Perfect company for all who enjoy being outdoors regardless of weather conditions!

High performing BAK-4 prisms and a superior multicoating ensure a bright and focused vision. The centre focusing system allows quick and simultaneous focusing for both eyes. Solid and handy rubber armouring for silent nature observations. The most striking feature: the binoculars are water pressure proof down to 5 m and fogging-free from -25°C to +40°C. Dioptre correction for eyeglass wearers. Supplied with Nylon case.

RAIN FOREST II 8x25 & 10x25

Measurements: 107 x 105 x 38 mm; weight: 320 g
Measurements: 107 x 105 x 38 mm; weight: 320 g



Type	Colour	Magnification	Lens-ø	Relative Brightness	Twilight Performance	Exit pupil	Field at 1000 m	Close Focus	Pupil Distance	Eye Relief	Item No	GTIN13	MSRP €
8x25		8x	25 mm	9,8	14,1	3,1 mm	143 m	4 m	57-72 mm	6,2 mm	533405	4000461074189	84,90
10x25		10x	25 mm	6,3	15,8	2,5 mm	114 m	6 m	57-72 mm	6,2 mm	533406	4000461074196	89,00

PRO LUX 8x21 & 10x25 POCKET BINOCULARS

The inexpensive beginners' range in the world of binoculars. Lightweight, small and handy – good company wherever you go. Fully coated optics ensure a perfect vision; the solid black rubber armouring makes the binocular shockproof.



PRO LUX 8x21 & 10x25

Measurements: 90 x 60 x 30 mm; weight: 210 g
Measurements: 110 x 70 x 33 mm; weight: 240 g



WOLF 8x21 & 10x25 POCKET BINOCULARS

Foldable pocket binoculars in an elegant design with compact black metal housing. They are fitted with perfect binocular functions. Multicoated optics grant reflection free observation. Solid construction with retractable eye-cups for eyeglass wearers. Supplied with Nylon case.



WOLF 8x21 & 10x25

Measurements: 96 x 46 x 60 mm; weight: 200 g
Measurements: 96 x 49 x 65 mm; weight: 220 g



Type	Colour	Magnification	Lens-ø	Relative Brightness	Twilight Performance	Exit pupil	Field at 1000 m	Close Focus	Pupil Distance	Eye Relief	Item No	GTIN13	MSRP €
Pro Lux		8x	21 mm	6,9	13	2,6 mm	122 m		36-74 mm	6 mm	544150	4000461008214	21,90
Pro Lux		10x	25 mm	6,3	15,8	2,5 mm	98 m		36-88 mm	3,5 mm	544200	4000461008221	22,90
Wolf		8x	21 mm	6,9	13	2,6 mm	123 m	6 m	31-76 mm	6,6 mm	531720	4000461037467	44,90
Wolf		10x	25 mm	6,25	15,8	2,5 mm	96 m	6 m	31-76 mm	6,6 mm	531721	4000461037474	49,90

DANUBIA 40 8x21 & 10x25
POCKET BINOCULARS

Ideal to take with! Whether it is a nature stroll or a touristic attraction, the pocket binoculars provide great views thanks to their multicoated optics and BK7 prisms. It is understood that they are extremely handy and compact. The retractable eye-cups allow eyeglass wearers strain free observations. The binocular comes in a case for transportation and safe and dust-free storage.



DANUBIA 40 8x21 & 10x25

Measurements: 102 x 102 x 33 mm; weight: 229 g
Measurements: 117 x 105 x 33 mm; weight: 250 g



Type	Colour	Magni- fication	Lens-ø	Relative Brightness	Twilight Performance	Exit pupil	Field at 1000 m	Close Focus	Pupil Distance	Eye Relief	Item No	GTIN13	MSRP €
8x21		8x	21 mm	6,89	12,96	2,5 mm	122 m	6 m	36-72 mm	7,6 mm	544260	4000461072468	59,00
10x25		10x	25 mm	6,25	15,81	2,5 mm	96 m	7 m	36-72 mm	9 mm	544261	4000461072475	69,00

ALPINA LX 8x40 | 7x50 | 10x50 | 12x50 | 20x50
PORRO PRISM BINOCULAR SERIES



Universal binoculars of the classical porro prism design. For comfortable and strain free observations, all 5 binocular types are fitted with a comfortably large centre focus wheel, retractable eye-cups for eyeglass wearers and a solid rubber armour. The multicoated optics and the BK7 prisms provide reflection free viewing impressions of rich contrasts. Supplied with case.

NOTE: The 1/4" tripod socket permits usage with a tripod, recommend for longer observations. For illustrations of tripods and tripod adapters see page 21.



LX 8x40

Measurements: 162 x 195 x 52 mm; weight: 810 g

LX 7x50 | 10x50 | 12x50 | 20x50

Measurements: 178 x 204 x 61 mm; weight: 950 g



ALPINA LX 7x50 | 10x50 | 12x50 | 20x50
PORRO PRISM BINOCULAR SERIES

ALPINA LX 8x40
PORRO PRISM BINOCULAR

Type	Colour	Magnification	Lens-ø	Relative Brightness	Twilight Performance	Exit pupil	Field at 1000 m	Close Focus	Pupil Distance	Eye Relief	Item No	GTIN13	MSRP €
8x40	●	8x	40 mm	25	17,9	5 mm	138 m	8 m	56-70 mm	9,5 mm	536100	4000461071386	59,90
7x50	●	7x	50 mm	49	18,7	7,14 mm	119 m	10 m	56-70 mm	9,5 mm	536101	4000461071393	64,90
10x50	●	10x	50 mm	25	22,4	5 mm	114 m	10 m	56-70 mm	9,5 mm	536102	4000461071409	64,90
12x50	●	12x	50 mm	17	24,5	7,14 mm	88 m	10 m	56-70 mm	9,5 mm	536103	4000461071416	79,90
20x50	●	20x	50 mm	6,3	31,6	2,5 mm	61 m	10 m	56-70 mm	9,5 mm	536104	4000461071423	84,90

ZOOM BINOCULARS

Zoom binoculars offer a variable magnification which is a great advantage for the observation of moving objects, e.g. at sport events or when observing birds and animals. They also allow comfortable long-term observations, e.g. on construction sites. Using a small magnification allows to get an overview of the scene; the variable zooming allows to observe smallest details at a far distance comfortably in the desired size of view. Zoom binoculars are ideal for long-term and permanent observations.

NOTE: We recommend the use of a tripod for larger magnifications and longer observations. See page 21 for a choice of tripods and tripod adapters.

ALPINA PRO ZOOM 8-20x50 | 10-30x60 ZOOM BINOCULARS

The most variable binocular types. By changing the zoom lever position, you can define the size of view of your object. The comfortably large centre focus wheel grants quick focusing. Ideal for all outdoor observations. Coated optics avoid reflections while viewing. The optical construction with large exit pupil ensures bright and brilliant images even under difficult light conditions.

You have the choice of 2 popular binocular sizes. Both are fitted with BK7 prisms, a solid black rubber armour, retractable eye-cups for eyeglass wearers and a tripod socket. Supplied with case and carrying strap.





ALPINA PRO ZOOM 8-20x50 | 10-30x60

Measurements: 185 x 180 x 62 mm; weight: 870 g

Measurements: 230 x 210 x 73 mm; weight: 900 g



Type	Colour	Magnification	Lens-ø	Relative Brightness	Twilight Performance	Exit pupil	Field at 1000 m	Close Focus	Pupil Distance	Eye Relief	Item No	GTIN13	MSRP €
8-20x50		8-20	50 mm	39-6,25	20-31,6	6,25-2,5 mm	84-57 m	10 m	56-70 mm	9,8 mm	536080	4000461010323	99,00
10-30x60		10-30	60 mm	36-4	24,5-42,4	6,0-2,0 mm	36 m (10x)	13 m	56-70 mm	9,8 mm	537100	4000461015847	129,90

HIGH PERFORMANCE ZOOM BINOCULARS 8-20x50 | 10-50x60 | 12-60x70 ZOOM BINOCULARS



The series offers a wide spectrum of magnifications for manifold applications. All models boast of an extraordinary optical performance with the flexibility of variable magnifications. Exiting observations of smallest details at a far distance become possible with the variable zooming in combination with the fast and easy centre focus system.

High performing BAK-4 prisms boasting of a superior multicoating provide frameless sharp and brilliant and vivid views rich in contrast. Diopetre correction for eyeglass wearers. Shock protection by solid rubber armour. The High Performance zoom binoculars are splash waterproof and are fitted with a tripod socket. Supplied in hard case and shoulder strap.

HIGH PERFORMANCE ZOOM 50 8-20x50

Handy zoom binocular featuring a high light transmission and a very good brightness.

Measurements 185 x 195 x 62 mm; weight: 1110 g

HIGH PERFORMANCE ZOOM 60 10-50x60

Ideal binocular for permanent observations.

Measurements: 220 x 205 x 70 mm; weight 1750 g

HIGH PERFORMANCE ZOOM 70 12-60x70

Ideal binocular for permanent observations also in the sky.

Measurements: 252 x 230 x 80 mm; weight: 2070 g

Type	Colour	Magnification	Lens-ø	Relative Brightness	Twilight Performance	Exit pupil	Field at 1000 m	Close Focus	Pupil Distance	Eye Relief	Item No	GTIN13	MSRP €
HP 50		8-20x	50 mm	39-6,25	20-31,6	6,25-2,5 mm	73,5-45,5 m	8 m/8x	56-70 mm	5,4 mm	531705	4000461073557	189,00
HP 60		10-50x	60 mm	36-1,36	24,5-54,8	6-1,2 mm	47-19 m	13 m/10x	56-70 mm	6,4 mm	531706	4000461073564	369,00
HP 70		12-60x	70 mm	34-1,4	29-64,8	5,8-1,2 mm	39-16,6 m	18 m/12x	56-70 mm	7,6 mm	531707	4000461073571	399,00

THEATRE & OPERA BINOCULARS 3x24 | 3x25 | 3,5x25

Friends of theatre and opera will be delighted about these attractive quality binoculars. The Galileo design with achromatic optics gets the performance much closer and will definitely increase your enjoyment. All models are supplied in a storage case.



101



103



104



102

101 - 3x24

Opera binocular of classical design in black and golden colour with metal chain

102 - 3x25

Shapely opera binocular in black and silver colour with neck strap

103 - 3,5x25

Elegant opera binocular in nacre and golden colour

104 - 3x25

Convenient and elegant: Opera binocular with handle in nacre and golden colour

Type	Colour	Magnification	Lens-ø	Relative Brightness	Twilight Performance	Exit pupil	Pupil Distance	Measurement	Weight	Item No	GTIN13	MSRP €
101		3x	24 mm	64	8,5	8 mm	55- 68 mm	32 x 55 x 100 mm	170 g	534101	4000461023859	69,00
102		3x	25 mm	68,9	8,7	8,3 mm	60-72 mm	25 x 47 x 96 mm	145 g	534102	4000461058073	69,00
103		3,5x	25 mm	50,4	9,4	7,1 mm	55-68 mm	32 x 55 x 100 mm	150 g	534103	4000461023866	69,00
104		3x	25 mm	68,9	8,7	8,3 mm	55-69 mm	32 x 56 x 100 mm	190 g	534104	4000461058080	79,00

MYMIGGÖ STRAP & WRAP BINOCULAR STRAP



The world's first binocular strap that morphs into a protective case within 2 seconds only. Suitable for roof prism and porro prism binoculars up to a type of 10x42. Ideal for transportation in a backpack or other luggage. Material blend of Neopren and soft Lycra®. Lightweight 150 g and comfortable to carry due to neck padding. Attaches to the binocular's connecting loop. Available in elegant black or camouflage design.

Colour	Item No	GTIN13	MSRP €
	BNCBB20	7290107830386	54,99
	BNCCM20	7290107830393	54,99



MAXIMUM BINOCULAR SIZE

	(H x W x D)
Roof Prism	155 x 140 x 60 mm
Porro Prism	140 x 170 x 70 mm



TRIPOD ADAPTERS FOR BINOCULARS

Using a tripod adapter, you can mount your binocular on a tripod. Recommended for long-term observations and for larger magnifications.

TAM TRIPOD ADAPTER FOR BINOCULARS

- 1/4" Tripod socket and mount
- Quality metal body

TA-1 TRIPOD ADAPTER FOR BINOCULARS

- 1/4" Tripod socket and mount
- Plastic housing

Type	Colour	Item No	GTIN13	MSRP €
TA-1	●	550003	4000461046612	12,90
TAM	●	550004	4000461037498	19,90



TRIPODS

For strain free long-term observations, we recommend the use of a tripod with your binocular or spotting scope. The image will remain stable. Once the set-up is completed, both hands will be free. Make your choice according to your needs.

PRO BLACK TRIPODS

- Pan & tilt ball head with quick-release shoe and integrated bubble level
- Tripod legs with one-touch leg locks and rubber tips
- Rubber foam grips
- Supplied with case

PRO BLACK 2

2 Sections | max./min. height 162/70 cm | 2,1 kg

PRO BLACK 3XL

3 Sections | max./min. height 193/83 cm | 2,7 kg

Type	Colour	Item No	GTIN13	MSRP €
Pro Black 2	●	372748	4000461054518	129,00
Pro Black 3 XL	●	372755	4000461059056	179,00

ZB-60

DIGITAL NIGHT VISION BINOCULAR

Compact night vision binocular with digital zoom and large LC display providing sharp colour images at daylight and black and white images rich in contrast in the dark. With a range of up to 400 m at daylight and up to 100 m in the darkness, the ZB-60 night viewer is a perfect companion in the hunting ground. In night mode, the infrared illumination allows to increase brightness of images in several steps.

- 2x digital zoom
- Large viewfinder with colour LC display
- Visual range up to 400 m at daylight and dawn; up to 100 m in the dark
- 7-step infrared illumination can be activated
- ¼" tripod mount
- Supplied with comfortable Neoprene neck strap

ZB-100PV

DIGITAL NIGHT VISION BINOCULAR WITH PHOTO AND VIDEO RECORDING

Same as ZB-60, however, additionally offering

- A stronger Infrared light and a
- **Photo and video recording mode** – the live view can be stored as an image or video on a SD memory card (optional) at any time.



ZB-100PV in the dark



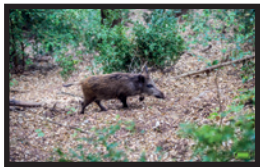
ZB-100PV in daylight

TECHNICAL SPECIFICATIONS	ZB-60	ZB-100PV
LC display format	4:3	
Display resolution	320 x 240 Pixel	
Infrared illumination	IR LED 1 W, 850 nm, adjustable in 7 steps	IR LED 2 W, 850 nm, adjustable in 7 steps
Angle of view	10°	
Aperture lens	f/1,4	
Energy source	8x Mignon AA LR6 1,5V (optional)	
Operation time (with fresh batteries)	up to app. 10 hours in day mode up to app. 6 hours with infrared illumination	
Memory Card	-	SD/SDHC memory card up to 32GB (optional)
Picture format	-	JPEG (1280x1024 Pixel)
Video format	-	AVI (640x480 Pixel)
Time stamp	-	Date and time on picture possible
Measurements	app. 195 x 145 x 55 mm	
Weight (w/o batteries)	app. 695 g	

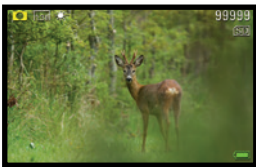


ZB-60

2x DIGITAL ZOOM



SHARP IMAGES,
DAY AND NIGHT



ZB-100PV

PHOTO AND VIDEO RECORDING
7-STEP INFRARED ILLUMINATION

Type	Colour	Item No	GTIN13	MSRP €
ZB-60		490335	4000461085352	159,00
ZB-100 PV		490336	4000461085369	229,00

NIGHT OWL™ iGEN NV 20/20 IMAGE CAPTURE NOiGM3X-IC DAY & NIGHT VISION MONOCULAR

The iGen Image Capture is one of the first night vision optics that takes real time recordings using any video recorder and saves still images directly on a SD memory card. The new proprietary image processing technology ensures a superior image quality without distortion and makes the monocular far more robust in comparison to the formerly used tube based technologies. Ideal also for viewing and recording at daylight.



FEATURES

- Records black and white images in JPEG or TIFF file format on a SD memory card
- Easy transmission to PC – no extra software required
- Composite video signal output with RCA socket
- Digital image converter
- Intelligent infrared adjusts automatically to the predominant light conditions
- Resolution: 30 line pairs per mm edge-to-edge
- Colour output choice for optimum viewing comfort
- Variable exposure time from 2-30 fps enhances the light gathering capability
- Variable display brightness
- Fitted with tripod socket
- Supplied in case

NIGHT OWL™ iGEN NV 20/20 DAY & NIGHT VISION MONOCULAR

Same as iGEN NV 20/20 Image Capture NOiGM3X-IC – but with video output only – not capable to take still images on memory cards.





NIGHT OWL™ iGEN NV 20/20 IMAGE CAPTURE

Measurements: 229 x 102 x 64 mm; weight: 550 g

NIGHT OWL™ iGEN NV 20/20

Measurements: 229 x 102 x 64 mm; weight: 550 g

Type	Colour	Magnification	Lens-ø	Ambient Light Amplification	Angle of View	Field at 1000 m	Battery Type (not included)	Item No	GTIN13	MSRP €
iGen NV 20/20 Image Capture		2,6x	20 mm	650x	12°	21 m	4x AA, 1,5V	490314	635328171110	899,00
iGen NV 20/20		2,6x	20 mm	650x	12°	21 m	4x AA, 1,5 V	490308	635328100004	859,00

NIGHT OWL™ NOB5X

NIGHT VISION BINOCULAR

Offers high performing optics in a compact housing. The optical construction of multiple elements with premium coating avoids reflections and ensures high light transmission for a clear view. The precisely working mechanics with center focus are packed in a rubberized housing and provide optimum viewing comfort.



NIGHT OWL™ NOB5X

Measurements: 198 x 137 x 74 mm; weight: 1100 g

NIGHT OWL™ NOBG1

Measurements: 118 x 107 x 52 mm; weight: 440 g

NIGHT OWL™ NOBG1

NIGHT VISION BINOCULAR

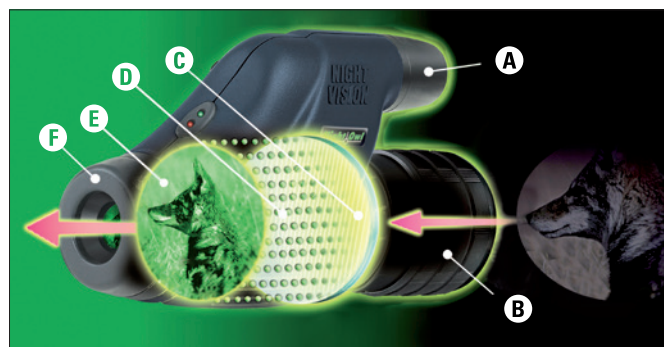
Tactical night vision binocular with comfortable detachable head mount. Compact and lightweight for hands-free viewing. Incorporated infrared illuminator and high quality optics provide a bright and vivid image, even in complete darkness.



Type	Colour	Magnification	Lens-ø	Light Amplification	Infrared Illuminator	Field at 1000 m	Battery Type (not included)	Item No	GTIN13	MSRP €
NOB5X	Black	5x	50 mm	✓	✓	24,5 m	CR 123/3 V	490317	635328171240	859,00
NOBG1	Black	1x	20 mm	✓	✓	32,3 m	LR1/3 V	490318	635328124451	1.099,00

HOW NIGHT VISION WORKS

In darkness moon or star light illuminate objects. This light is gathered by the objective lens of the night vision device and focused onto the image intensifier tube. The intensifier tube converts the bundled light into single electrons, which are multiplied by a high voltage tube (17 kV). Then the electrons strike in huge quantity on a phosphorous screen, whereby the screen illumination is activated. The amplified light signals now become comfortably visible in the eyepiece of your night vision device.



- A Infrared Illuminator
- B Objective Lens
- C Photo Cathode Screen
- D Electrons
- E Phosphorescent Screen
- F Ocular Lens



NIGHT OWL™ NONM 3X-G MONOCULAR

NIGHT VISION MONOCULAR

Compact night viewer for single hand use in a black rubberized housing. The incorporated infrared illuminator is made for use in complete darkness or to improve target recognition in any environment. Thanks to the wide field of view the NONM3X-G is well-suited to observe objects in motion. Diopter adjustment from -4 to +4.

NONM3X-G

Measurements: 154 x 60 x 96 mm; weight: 350 g

NIGHT OWL™ NOXM50 MONOCULAR

NIGHT VISION MONOCULAR

Inexpensive night vision monocular in classical design offers high magnification for a better image resolution. Robust construction with black rubberized housing with shockproof glass lens. The incorporated infrared illuminator is made for use in complete darkness or to improve target recognition in any environment. Diopter adjustment from -4 to +4.

NOXM50

Measurements: 226 x 122 x 74 mm; weight: 455 g

Type	Colour	Magnification	Lens-ø	Light Amplification	Infrared Illuminator	Field at 1000 m	Battery Type (not included)	Item No	GTIN13	MSRP €
NONM3X-G		3x	42 mm	✓	✓	34 m	CR 123/3 V	490309	6353281751012	349,00
NOXM50		5x	50 mm	✓	✓	19,7 m	CR 123/3 V	490316	635328171219	399,00



NIGHT OWL™ XGEN PRO

DIGITAL NIGHT VIEWER

Latest night vision technology for leisure time users at an affordable price. Monocular with high performing IR illumination for use at dusk or dark night. Digital zoom 3x to 6x with frame rate control and IR intensity control. Diopter adjustment -4 to +4, viewing range approx. 90 m.

XGEN PRO

Measurements: 153 x 55 x 96 mm; weight: 355 g

Type	Colour	Magnification	Close Focus	Close Focus	Field at 1000 m	Sensor Resolution	Micro display resolution	Battery Type (not included)	Item No	GTIN13	MSRP €
XGEN Pro		3-6x	37 mm	1 m	11,9 m	640 x 480 Pixel	320 x 240 Pixel	4x AA 1,5V	490321	635328171622	249,00

NIGHT OBSERVER 100

NIGHT VISION MONOCULAR



Night Vision Monocular 3x42 – Light amplifier with built-in infrared illuminator. The night vision monocular Night Observer 100 is a light amplifier for use in dusk with a maximum viewing range of 150-200 m. Using the built-in infrared illuminator observations in complete darkness are possible within a range of max. 100 m. Comfortable long-eye relief and diopter adjustment -5 to +5 for eyeglass wearers. Water-resistant composite housing with ¼" tripod socket. Ambient temperature -30°C to +45°C. Supplied in Nylon case.

NIGHT OBSERVER 100

Measurements: 172 x 82 x 60 mm; weight: 420 g



Type	Colour	Magnification	Lens-ø	Light Amplification	Infrared Illuminator	Field at 1000 m	Battery Type (not included)	Item No	GTIN13	MSRP €
Night Observer 100		3x	42 mm	✓	✓	29,9 m	CR 123/3 V	490330	4000461063114	249,00

HANDY AND PRECISE

DJE-400 | DJE-600

LASER RANGE FINDERS

multi
coated

Handy optoelectronic laser range finders with rubber armour for fast and precise metering of distances to static objects within a range of up to 400 m /600 m. Comfortable metering readout of measurements on the LCD in the ocular lens. When metering over a distance larger than 150 m disturbing objects in the vicinity such as branches of trees or electric wires are not considered.

The monocular with 6x magnification and MC coated front lens is well-suited for nature observations and ideal for hunters, riflemen, golfers, yachting, craft and many more outdoor activities. The retractable eye-cup allows eyeglass wearers strain free observations. Supplied with Nylon case and wrist strap.

SPECIFICATIONS	DJE-400	DJE-600
Range Finder		
Metering Range	5 - 400 m	5 - 600 m
Metering Accuracy	+/- 1 m	
Messdauer	0,3 s	
Metering Modes	regular, rain, fog , >150 m	
Metering Units	meters / yards	
Laser Type	905 nm	
Reticle	to target the objects	
Monocular	6 x 25 mm	
Front lens	MC multicoated	
Field at 1000 m	122 m	
Relative Brightness	17,6	
Twilight Performance	12,2	
Exit Pupil	4,2 mm	
Operating Temperature	-10 to +50°C	
Power Supply	1x CR2 button cell (not included)	
Measurements	115 x 40 x 42 mm	
Weight	220 g	
Housing Colour	green	green or orange




DJE-400 GREEN



DJE-600 ORANGE

DJE-600 GREEN

Type	Colour	Item No	GTIN13	MSRP €
DJE-400 green		900410	4000461084621	169,00
DJE-600 green		900407	4000461078088	179,00
DJE-600 orange		900408	4000461084614	179,00



POCKET MONOCULARS 8x25 | 10x25

Perfect for nature excursions and activities! The extremely compact and handy monocular with a rugged black rubber and high performing optics provides bright, brilliant and sharp views. Fast focusing and retractable eye-cups for eyeglass wearers allow comfortable viewing.

- BAK-4 prisms
- Phase and multi coated lenses
- Fogging-free due to nitrogen gas filling
- Water pressure proof down to 1,5 m (3 min)
- Supplied with wrist strap and Nylon carrying case with belt loop



SPECIFICATIONS	8x25	10x25
Magnification	8x	10x
Lens ø	25 mm	
Relative Brightness	9,6	6,3
Field auf 1000 m	122 m	101 m
Angle of View	7°	5,8°
Exit Pupil ø	3,1 mm	2,5 mm
Twilight Performance	14,1	15,8
Measurements	51 x 113 x 38 mm	
Weight	160 g	



Type	Colour	Item No	GTIN13	MSRP €
Pocket 8x25		538510	4000461058110	59,00
Pocket 10x25		538512	4000461058585	64,00

POCKET TELESCOPES 25x30 | 25x35

The classical telescope design dates back to the days of Columbus. Nowadays it is popular for nature observations, riflemen and hunters – wherever large magnification is required in a compact design. The folded telescopes fit in every pocket.



25x30 BROWN/BRASS

POCKET TELESCOPE

Fully coated optics (FC), supplied in case.
Measurements: 135 - 345 x ø 36 mm; weight: 220 g



25x30 BLACK

POCKET TELESCOPE



Rubber coated pocket telescope with MC multicoated optics.
Supplied in case.
Measurements: 135 - 295 x ø 36 mm; weight: 195 g



25x35 BROWN/BRASS

POCKET TELESCOPE

Fully coated optics (FC); large field of view: 52 m at 1000 m.
Supplied in case.
Measurements: 132 - 330 x ø 42 mm; weight: 255 g

Type	Colour	Magnification	Lens-ø	Relative Brightness	Twilight Performance	Exit Pupil	Item No	GTIN13	MSRP €
25x30 Brown/Brass		25x	30 mm	1,4	27,4	1,2 mm	538503	4000461006388	49,90
25x30 Black		25x	30 mm	1,4	27,4	1,2 mm	538504	4000461006241	59,90
25x35 Brown/Brass		25x	35 mm	1,4	29,6	1,4 mm	538506	4000461058189	79,00

RAIN FOREST ZOOM & ZOOM ED SPOTTING SCOPES ZOOM SPOTTING SCOPES

Observations become a great experience using a Rain Forest zoom spotting scope. With the large magnifications, you will discover details, which usually remain hidden. From a safe distance, you can make undisturbed observation of animals in wildlife, birds, insects and more. The Rain Forest zoom spotting scopes are also well-suited for riflemen to control targets.

The robust and weatherproof metal housing with integrated sun shield makes the spotting scope all-weather proof. Fogging-free optics thanks to Nitrogen gas filling. The supplied Stay-On case remains on the scope during observation and protects well from the effects of weather. All models are fitted with a comfortable 45° inclined view and comfortable and fast one-touch focusing control for undisturbed observations.



The optical configuration with BAK-4 prisms and MC multicoated lenses offers optimum conditions for sharp and brilliant viewing impressions and long-term observation. At dawn or in the dark, we recommend the use of the superior quality ED version of spotting scopes. In case the magnification is not sufficient, we offer optional eyepieces. The supplied interchangeable zoom eyepiece allows the attachment of a T2 adapter for taking pictures with DSLR & DSLM cameras.

DISCOVER DETAILS



RAIN FOREST 20-60x80 A
Length: 470 mm; weight: 1385 g

RAIN FOREST 22-67x100 A
Length: 530 mm; weight: 1890 g

RAIN FOREST ED 20-60x80 A
Length: 490 mm; weight: 1455 g

RAIN FOREST ED 22-67x100 A
Length: 550 mm; weight: 2000 g

RAIN FOREST 20-60x80 A

Spotting scope with interchangeable zoom eyepiece for 20 to 60x magnification

- Front lens 80 mm
- Focal length 480 mm
- Relative brightness 16 - 1,7
- Twilight performance 40 - 69,3
- Tripod socket ¼"

RAIN FOREST 22-67x100 A

Spotting scope with interchangeable zoom eyepiece for 22 to 67x magnification

- Front lens 100 mm
- Focal length 540 mm
- Relative brightness 20,6 - 2,2
- Twilight performance 46,9 - 81,9
- Tripod socket and rail with ¼" fully metal screw mount to balance the scope on a tripod

The large lens opening is of great advantage when weather conditions are bad.

RAIN FOREST ED 20-60x80 A

Spotting scope with interchangeable zoom eyepiece for 20 to 60x magnification

- Front lens 80 mm
- Focal length 480 mm
- Relative brightness 16 - 1,7
- Twilight performance 40 - 69,3
- Tripod socket ¼"

The ED lens is fitted with high performing ED glass (extra low dispersion) providing excellent sharp and brilliant impressions in true colours. Even observations at dawn or in the dark become possible.

RAIN FOREST ED 22-67x100 A





Spotting scope with interchangeable zoom eyepiece for 22 to 67x magnification

- Front lens 100 mm
- Focal length 540 mm
- Relative brightness 20,6 - 2,2
- Twilight performance 46,9 - 81,9
- Tripod socket and rail with ¼" fully metal screw mount to balance the scope on a tripod

Superlative spotting scope for optimum observation results even at gloomy weather or low light. The lens is fitted with high performing ED glass (extra low dispersion) providing excellent sharp and brilliant viewing impressions in true colours. Even observations at dawn or in the dark become possible.

**CASE PROTECTS FROM
THE EFFECTS OF WEATHER**



Type	Colour	Magnification	Lens-ø	Field at 1000 m	Close Focus	Eye Relief	Item No	GTIN13	MSRP €
20-60 x 80 A		20-60x	80 mm	35,0 - 17,5 m	10 m	18 - 15 mm	538200	4000461038921	319,00
22-67 x 100 A		22-67x	100 mm	31,5 - 16,0 m	10 m	18 - 15 mm	538201	4000461038938	439,00
ED 20-60 x 80 A		20-60x	80 mm	35,0 - 17,5 m	6,5 m	18 - 15 mm	538202	4000461038945	749,00
ED 22-67 x 100 A		22-67x	100 mm	31,5 - 16,0 m	6,5 m	18 - 15 mm	538203	4000461038952	859,00



DSLR / DSLM PHOTOGRAPHY WITH RAIN FOREST SPOTTING SCOPES

Using a suitable T2 adapter you can connect your DSLR / DSLM camera directly to the zoom eyepiece of the spotting scope. You simply need to remove the rubber eye-cup to get access to the screw mount for the T2 adapter. The zoom function of the eyepiece is given while taking pictures.



T2 ADAPTER

The fully metal adapters allow combining lenses and accessories with universal T2 mount to DSLR & DSLM cameras.

Type	Item No	GTIN13	MSRP €
Canon EOS	321722	4000461000867	35,90
Canon FD	321702	4000461000720	35,90
Leica R	321712	4000461000829	35,90
Minolta MD	321701	4000461000713	35,90
M42	321700	4000461000706	35,90
Nikon	321703	4000461000737	35,90
Nikon 1	321704	4000461065071	35,90
Olympus OM	321705	4000461000751	35,90
Olympus OM Micro 4/3	321803	4000461054990	35,90
Olympus 4/3	321800	4000461025693	35,90
Pentax PK	321706	4000461000768	35,90
Petri BAJ	321714	4000461000843	35,90
Praktica B	321716	4000461014383	35,90
Rollei/Voigtl.	321708	4000461000782	35,90
Sony NEX-E	321725	4000461063312	35,90
Sony	321721	4000461000850	35,90



EYEPIECE MK25 FOR RAIN FOREST SPOTTING SCOPE

The interchangeable eyepiece with fix local length provides extremely brilliant views with a large angle of vision. Great for observations within a short or medium distance. Not suitable for taking photos. Supplied with plastic housing and case.

- Focal length: 25 mm
- Retractable and removable eye-cup
- Measurements: app. 55 x ø 40 mm
- Weight: app. 55 g
- Magnification see chart

Rain Forest Scope Type	20-60x80	22-67x100	ED 20-60x80	ED 22-67x100
Scope Focal Length	480	540	480	540
MK25 Eyepiece	19x	22x	19x	22x
MH6 Eyepiece	80x	90x	80x	90x

EYEPIECE MH6 FOR RAIN FOREST SPOTTING SCOPE

The interchangeable eyepiece with fix local length provides extremely brilliant views with a large angle of vision. Great for observations over larger distances. Not suitable for taking photos. Supplied with plastic housing and case.

- Focal length: 6 mm
- Retractable and removable eye-cup
- Measurements: app. 80 x ø 40 mm
- Weight: app. 80 g
- Magnification see chart

DV-1980 PHOTO- & VIDEO TRIPOD



i Recommended for the use with Rain Forest spotting scopes:

Extremely sturdy aluminum tripod with extra-long swiveling grip. Allows comfortable alignment of the spotting scope. It will stand steadily for smooth observations.

- Height: min. 86 cm / max. 198 cm
- Weight: 4740 g
- Load: max. 7 kg

Type	Colour	Item No	GTIN13	MSRP €
Eyepiece MK25		538208	4000461053955	48,00
Eyepiece MH6		538209	4000461053962	64,00
DV-1980 Aluminum Tripod		380365	4000461081392	279,00

FOR A STABLE VIEW



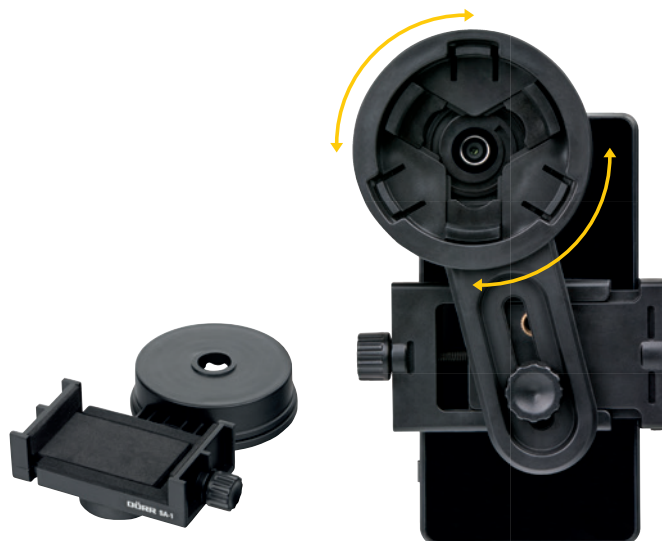
SA-1 SMARTPHONE PHOTO ADAPTER

Ideal for pictures and video filming. The adapter suits for many spotting scopes and is simply slid onto the ocular lens. Many popular Smartphones can be clamped onto the adapter – for great distant shots of animals and nature. 2 tripod sockets ¼" facilitate recording.



SPECIFICATIONS

- Variable eyepiece mount diameter from 26 to 54 mm
- Variable phone holder from 56 to 980 mm
- Measurements: 155 x 70 x 40 mm (folded)
- Weight: 80 g



CAMERA ADAPTERS FOR COMPACT CAMERAS

If you own a digital compact camera, you can take pictures with Danubia spotting scopes and telescopes, using this universal photo adapter.

- Max. camera load: 2 kg
- Height: 195 mm
- Weight: 350 g



Type	Colour	Item No	GTIN13	MSRP €
SA-1 Smartphone Adapter for Spotting Scopes	Black	538215	4000461088162	14,90
Camera Adapter for Compact Cameras	Black	566557	4000461025983	59,00



POWERFUL



45° ANGLE VIEW

LUCHS 60 20-60x60 | LUCHS 80 20-60x80 ZOOM SPOTTING SCOPES

Powerful zoom spotting scopes fitted with high quality optics providing sharp and brilliant view. Well-suited for long-term and nature observation. The 45° angle view and the twist-up eye-cups for eyeglass wearers grant viewing comfort. Weatherproof housing with rubber armour and fogging-free optics thanks to Nitrogen gas filling. Supplied with table tripod and case.

SPECIFICATIONS	LUCHS 60	LUCHS 80
Magnification	20 - 60 x	20 - 60 x
Lens ø	60 mm	80 mm
Relative brightness	9 - 1	16 - 1,7
Field at 1000 m	31 m - 16 m	33 m - 16,5 m
Exit pupil ø	3 mm - 1 mm	4 mm - 1,3 mm
Twilight performance	34,6 - 60	40 - 69,3
Close focus distance	8 m	10 m
MC Multicoated front lens	✓	✓
Silver coated BAK-4 prisms	✓	✓
45° angle view	✓	✓
Tripod mount 1/4"	✓	✓
Nitrogen gas filling	✓	✓
Spotting Scope measurements	335 x 150 x 80 mm	438 x 160 x 95 mm
Spotting Scope weight	760 g	1195 g
Table Pod extended height	230 mm	
Table Pod transport size	295 mm	
Table Pod weight	245 g	

DV-1580 PHOTO- & VIDEO TRIPOD



Sturdy aluminum tripod with 2-way fluid panhead and long swiveling grip. Allows comfortable alignment of the spotting scope. It will stand steadily for smooth observations.

- Height: min. 63 cm / max. 158 cm
- Weight: 2100 g
- Load: max. 4 kg

FOR A STABLE VIEW



i Recommended for the use with Luchs spotting scopes

Type	Colour	Item No	GTIN13	MSRP €
Luchs 60 20-60x60		538105	4000461079405	179,00
Luchs 80 20-60x80		538106	4000461080463	229,00
DV-1580 Aluminum Tripod		380360	4000461081378	99,00



KAUZ 10-30x50
ZOOM SPOTTING SCOPE

Ultra-compact zoom spotting scope with 45° angle view. Ideal for riflemen, sport and leisure viewing, also suited for technical observation. Compact design with fully coated lenses in a green-black rubber armoured housing. Zooming function at the eyepiece, focus control at the middle tube of the scope. The clamp at the tube allows rotating the scope to either direction for flexible view from the most comfortable position. Supplied with case and table tripod.



INCLUDED

SPECIFICATIONS	KAUZ 10-30x50 Zoom	
Magnification	10 - 30x	
Lens ø	50 mm	
	10x	30x
Relative brightness	25	2,9
Field at 1000 m	56 m	30 m
Exit pupil ø	5 mm	1,7 mm
Twilight performance	22,4	38,7
Close focus distance	8 m	
FC Fully coated lenses	✓	
BK-7 prisms	✓	
45° angle view	✓	
Tripod mount ¼"	✓	
Spotting Scope measurements	225 x 125 x 65 mm	
Spotting Scope weight	420 g	
Table Pod extended height	240 mm	
Table Pod transport size	295 mm	
Table Pod weight	310 g	

Type	Colour	Item No	GTIN13	MSRP €
Kauz 10-30x50		538245	4000461083976	119,00



FUCHS 12-30x50 | 16-40x60 ZOOM SPOTTING SCOPES

Ideal for sport and leisure viewing as well as for technical observations. Compact design with coated BK7 prisms and a fully coated front lens. Zooming at the eyepiece, focus at the middle tube of the scope.

- Retractable eye-cups allow comfortable viewing for eyeglass wearers
- 45° angle view
- Black housing with rubber armour
- Supplied with carrying case

SPECIFICATIONS	FUCHS 12-30x50	FUCHS 16-40x60
Magnification	12 - 30x	16 - 40x
Lens ø	50 mm	60 mm
Relative brightness	17,6 (12x) 2,9 (30x)	14 (16x) 2,25 (40x)
Field at 1000 m	52 m (12x) 26 m (30x)	38 m (16x) 21 m (40x)
Exit pupil ø	4,2 mm (12x) 1,7 mm (30x)	3,75 mm (16x) 1,5 mm (40x)
Twilight performance	24,5 (12x) 38,7 (30x)	31 (16x) 49 (40x)
Close focus distance	8 m	10 m
FC Fully coated lenses	✓	
BK-7 prisms	✓	
45° angle view	✓	
Tripod mount 1/4"	✓	
Measurements	232 x 135 x 70 mm	305 x 135 x 75 mm
Weight	490 g	660 g



Type	Colour	Item No	GTIN13	MSRP €
Fuchs 12-30x50	●	538230	4000461078767	69,90
Fuchs 16-40x60	●	538240	4000461078774	89,90



WOLF II 15-45x50
ZOOM SPOTTING SCOPE



Compact and handy zoom spotting scope offering an optimum price quality ratio. The two ocular openings allow changing from 45° inclined view to straight view. This opens a wide and variable usage, also for riflemen. The BK-7 prisms and the multicoated front lens ensure brilliant and sharp views. Twist-up eye-cups allow comfortable viewing for eyeglass wearers. Rubber-armoured black plastic housing. Supplied with table tripod and case.



SPECIFICATIONS	WOLF II 15-45x50	
Magnification	15 - 45x	
Lens ø	50 mm	
	15x	45x
Relative brightness	10,9	1,2
Field at 1000 m	47 m	24 m
Exit pupil ø	3,3 mm	1,1 mm
Twilight performance	27,4	47,4
Close focus distance	8 m	
Multicoated front lens (MC)	✓	
BK-7 prisms	✓	
45° angle view or straight view	✓	
Tripod mount 1/4"	✓	
Spotting Scope measurements	240 x 140 x 80 mm	
Spotting Scope weight	590 g	
Table Pod extended height	195 mm	
Table Pod transport size	240 mm	
Table Pod weight	225 g	

Type	Colour	Item No	GTIN13	MSRP €
Wolf II 15-45x50		538045	4000461078750	119,00



WITH NON-ASPHERICAL MAGNIFIER



WITH ASPHERICAL MAGNIFIER



LL-572
PROFI LED MAGNIFIER

Professional LED magnifier with "Press-to-Light" function.
A short press on the magnifier turns on the bright LEDs and ensures an even and brilliant illumination. Aluminum housing and high quality glass lens. Designed for the professional use, hobby and as a reading aid. Supplied in hard case.

SPECIFICATIONS	LL-572
Magnification	5x
Lens ø	70 mm
Illumination	3 white LEDs
Power Source	2x CR 2016 3 V button cell (included)
Measurements	ø 95 mm x 50 mm
Weight	175 g

ASPHERICAL MAGNIFIER 3x/5x

Hand-held magnifier with integrated LED illumination and ergonomically shaped grip. The especially shaped aspherical lens avoids distortion. Perfect for viewing stamps, coins, maps, magazines, insects, plants and more.

SPECIFICATIONS	ASPHERICAL MAGNIFIER 3x/5x
Magnification main lens	3x
Main lens ø	90 mm
Magnification additional lens	5x
Additional lens ø	20 mm
Power source	2x AAA Micro (not included)
Measurements	200 x 90 x 35 mm
Weight w/o batteries	80 g

Type	Colour	Item No	GTIN13	MSRP €
Profi LED Magnifier LL-572		540140	4000461081231	29,90
Aspherical Magnifier 3x/5x		540120	4000461047411	19,90



LL-90 LED
LED MAGNIFIER 2,5x/5x Ø 90 mm


Hand-held magnifier featuring a high quality acrylic lens, an integrated LED illumination (2 LEDs) and an ergonomically shaped handle with "Soft-Touch" surface. Ideal as a reading aid and for viewing stamps, coins, maps, insects, plants and more. Supplied in hard case.

LL-110 LED
LED MAGNIFIER 2,5x/5x Ø 110 mm

Hand-held magnifier featuring a high quality acrylic lens, an integrated LED illumination (2 LEDs) and a sturdy aluminum handle. Ideal as a reading aid and for viewing stamps, coins, maps, insects, plants and more. Supplied in hard case.



SPECIFICATIONS	LL-90	LL-110
Magnification main lens	2,5x	2,5x
Main lens ø	90 mm	110 mm
Magnification additional lens	5x	5x
Additional lens ø	20 mm	23 mm
Power source	2x AAA Micro batteries (included)	2x AA Mignon batteries (included)
Measurements	230 x 90 x 35 mm	245 x 110 x 22 mm
Weight w/o batteries	70 g	180 g

Type	Colour	Item No	GTIN13	MSRP €
LED Magnifier LL-90		540142	4000461083266	19,90
LED Magnifier LL-110		540145	4000461083273	24,90

CUBE

STAND MAGNIFIER

Precision magnifier with focus ring. The transparent acrylic base allows the ambient light to illuminate the subject for bright, clear viewing. Perfect for viewing stamps, coins, maps, scripts, insects, plants and more.

SPECIFICATIONS	CUBE
Magnification	8x
Lens ø	23 mm
Measurements	43 x 43 x 46 mm
Weight	35 g



LL-3 | LL-6

MAGNIFIERS

Stand magnifier with high quality optical lens. The transparent acrylic base allows the ambient light to illuminate the subject for bright, clear viewing. Perfect for viewing stamps, coins, maps, magazines, insects, plants and more.

SPECIFICATIONS	LL-3	LL-6
Magnification	3x	6x
Lens ø	47 mm	
Measurements	ø 65 x 54 mm	
Weight	65 g	75 g



LED MAGNIFIERS 4x65 | 3x73 | 3x90

Hand-held magnifier illuminated by 6 LEDs – ideal for reading and viewing details. Requires 2 x 1,5V AA batteries. Available in 3 variants.

SPECIFICATIONS	4x65	3x73	3x90
Magnification	4x	3x	3x
Lens ø	60	70	85
Measurements	ø 85 x 210 mm	ø 95 x 220 mm	ø 110 x 235 mm
Weight	80 g	98 g	135 g



Trade information: PU: 12 pcs in display.

Type	Colour	Item No	GTIN13	MSRP €
Cube		540130	4000461058516	9,90
LL-3		540108	4000461078651	12,90
LL-6		540109	4000461078668	13,90
LED Magnifiers 4x65 3x73 3x90		540135	-	9,90*

*Price per unit



METEOR 31

NEWTON REFLECTOR TELESCOPE D76/F700 mm

Fully equipped mirror telescope for beginners featuring. AZ-1 Azimuth mount, aluminum tripod adjustable in height and 1¼" accessory mount.

Tube length: 70 cm; weight: 3,2 kg.

Supplied with finder scope 5x24, 2 eyepieces F6, H20, Barlow lens 2x and moon filter. Magnification: 35-232x (F6/116x, H20/35x).

OPTIONALLY RECOMMENDED ACCESSORIES*:

- Further eyepieces
- Erecting eyepiece
- Photo adapter



SATURN 50

NEWTON REFLECTOR TELESCOPE D114/F900 mm



Ideally configured mirror telescope with EQ-2 equatorial mount, counterweights and flexible shafts for fine adjustment, aluminum tripod and 1¼" accessory mount. Tube length: 90 cm; weight: 11 kg.

Supplied with finder scope 5x24, 3 eyepieces SR4, H12, H20, Barlow lens 2x and moon filter. Magnification: 45-450x (SR4/225x, H12,5/72x, H20/45x).

OPTIONALLY RECOMMENDED ACCESSORIES*:

- Further eyepieces
- Erecting eyepiece
- Photo adapter



Type	Colour	Mount	Lens-Ø	Focal Length	Focal Ratio	Item No	GTIN13	MSRP €
Meteor 31		AZ-1	76 mm	700 mm	1 : 9,2	566031	4000461017018	149,00
Saturn 50		EQ-2	114 mm	900 mm	1 : 7,9	566049	4000461019609	339,00

*Optional accessories see page 53-55



DELTA 20

CATADIOPTRIC REFLECTOR TELESCOPE D114/F1000 mm

The extremely compact mirror telescope features a large focal length and offers an excellent price/quality ratio. Fitted with EQ-1 equatorial mount with counterweights and flexible shafts for fine adjustment, aluminum tripod adjustable in height and 1¼" accessory mount.

Tube length: 46,5 cm; weight: 6 kg.

Supplied with finder scope 5x24, 2 eyepieces F6, H20, Barlow lens 2x and moon filter. Magnification: 50-332x (F6/166x, H20/50x).

OPTIONALLY RECOMMENDED ACCESSORIES*:

- Further eyepieces
- Erecting eyepiece
- Photo adapter
- Motor drive for EQ-1 mount



DELTA 30

CATADIOPTRIC REFLECTOR TELESCOPE D114/F1000 mm

Extremely compact mirror telescope with large focal length and a sophisticated configuration: EQ-2 equatorial mount with counterweights and flexible shafts for fine adjustment, aluminum tripod adjustable in height and 1¼" accessory mount. Tube length: 46,5 cm; weight: 14 kg.

Supplied with finder scope 6x30, 2 high quality Plössl eyepieces PL10, PL20, achromatic Barlow lens 2x – serves as photo adapter as well, erecting eyepiece 1,5x, motor drive for EQ-2.

Magnification 50-200x(PL10/100x, PL20/50x).

OPTIONALLY RECOMMENDED ACCESSORIES*:

- Further eyepieces



Type	Colour	Mount	Lens-ø	Focal Length	Focal Ratio	Item No	GTIN13	MSRP €
Delta 20		EQ-1	114 mm	1000 mm	1 : 8,8	566032	4000461019616	289,00
Delta 30		EQ-2	114 mm	1000 mm	1 : 8,8	566034	4000461053863	425,00

*Optional accessories see page 53-55



ATLAS 2000

NEWTON REFLECTOR TELESCOPE D130/F900 mm

Mirror telescope with high light transmission fitted with the precise EQ-3 equatorial mount, sturdy aluminum tripod and 1¼" accessory mount.

Tube length: 90 cm; weight: 17 kg.

Supplied with finder scope 6x30, 3 high performing Kellner eyepieces K6,3, K10, K25, achromatic Barlow lens 2x – serves as a photo adapter as well, moon filter. Magnification: 36-284x (K6,3/142x, K10/90x, K25/36x).



OPTIONALLY RECOMMENDED ACCESSORIES*:

- Erecting eyepiece
- EQ-3 dual axis clock drive for right ascension and declination

Type	Colour	Mount	Lens-ø	Focal Length	Focal Ratio	Item No	GTIN13	MSRP €
Atlas 2000		EQ-3	130 mm	900 mm	1 : 6,9	566082	4000461013898	519,00

*Optional accessories see page 53-55



SIRIUS 150

NEWTON REFLECTOR TELESCOPE D150/F750 mm

Compact mirror telescope offering a high light transmission, fitted with EQ-3 equatorial mount, a sturdy aluminum tripod and 1¼" accessory mount. Tube length: 65 cm; weight: 17,6 kg.

Supplied with finder scope 6x30, 3 high performing eyepieces K6,3, PL10, PL25, achromatic Barlow lens 2x – serves as a photo adapter as well, moon filter. Magnification: 30- 238x (K6,3/119x, PL10/100x, PL25/30x).



OPTIONALLY RECOMMENDED ACCESSORIES*:

- Erecting eyepiece
- EQ-3 dual axis clock drive for right ascension and declination



Type	Colour	Mount	Lens-ø	Focal Length	Focal Ratio	Item No	GTIN13	MSRP €
Sirius 150		EQ-3	150 mm	750 mm	1 : 5	566075	4000461013881	599,00

*Optional accessories see page 53-55



ORION 200

NEWTON REFLECTOR D200/F1000 mm

Large and powerful mirror telescope with an excellent focal ratio of 1:5, fitted with the heavy EQ-5 equatorial mount and a sturdy aluminum tripod. 1¼" accessory mount. Tube length: 96 cm; weight: 29 kg.

Supplied with finder scope 9x50, 3 Plössl eyepieces PL6,3, PL10, PL25, achromatic Barlow lens 2x – serves as a photo adapter as well.

Magnification: 40-316x (PL6,3/158x, PL10/75x PL25/30x).



OPTIONALLY RECOMMENDED ACCESSORIES*:

- Erecting eyepiece
- Moon filter
- EQ-5 dual axis clock drive for right ascension and declination



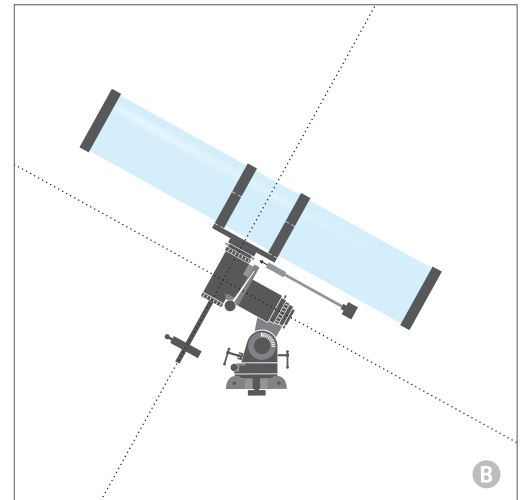
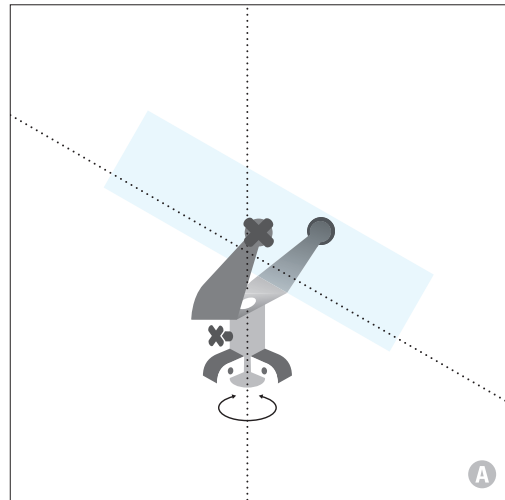
Type	Colour	Mount	Lens-Ø	Focal Length	Focal Ratio	Item No	GTIN13	MSRP €
Orion 200		EQ-5	200 mm	1000 mm	1 : 5	566092	4000461014963	859,00

*Optional accessories see page 53-55

TELESCOPE MOUNTS

A Scheme of an Azimuth Mount

B Scheme of an Equatorial Mount

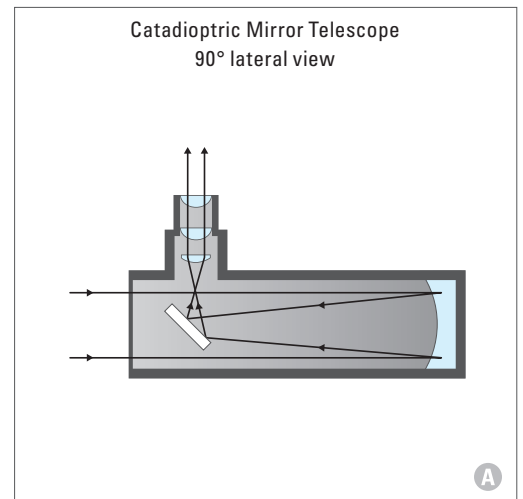
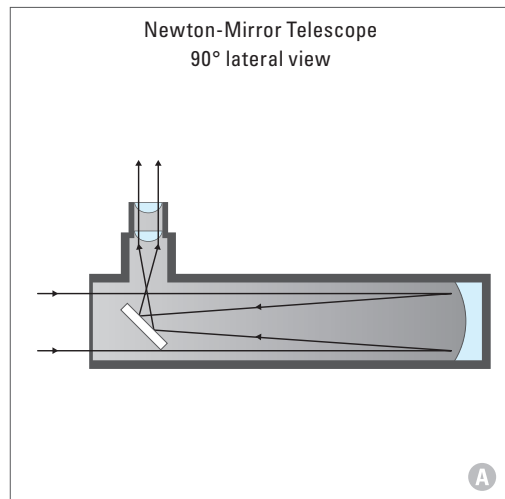


TELESCOPE DESIGNS

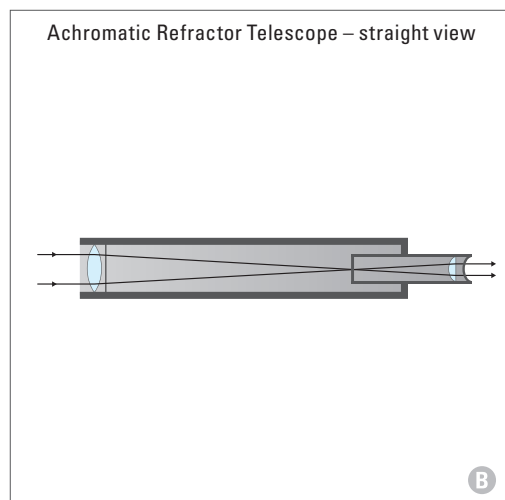
A MIRROR TELESCOPES

Reflectors

up to 130 mm
with spherical mirror,
as of 150 mm
with parabolic mirror



B REFRACTOR TELESCOPES





PLUTO

ACHROMATIC REFRACTOR TELESCOPE D50/F600 mm

Starter telescope with Azimuth mount and aluminum tripod adjustable in height and with accessory tray. Accessory mount 1".

Tube length: 51 cm; weight: 2,2 kg

Supplied with finder scope 2x20, 2 eyepieces H6 and H12.5, Barlow lens 2x, diagonal mirror 90°. Magnification: 48-200x (H6/100x, H12.5/48x)



OPTIONALLY RECOMMENDED ACCESSORIES*:

- Erecting eyepiece
- Moon filter



MERKUR 60 A

ACHROMATIC REFRACTOR TELESCOPE D60/F910 mm

Compactly designed starter telescope with remarkably large focal length for higher magnifications. Easy to transport. AZ-2 Azimuth mount with aluminum tripod and micro height control, accessory mount 1¼".

Tube length: 50 cm; weight: 2,7 kg.

Supplied with finder scope 5x24, 3 eyepieces SR4, H12, H20, Barlow lens 2x, erect image eyepiece 1,5x, moon filter, diagonal mirror 90°.

Magnification: 45-450x (SR4/227x, H12,5/72x, H20/45x).



OPTIONALLY RECOMMENDED ACCESSORIES*:

- Photo adapter
- Further eyepieces



MARS 66

ACHROMATIC REFRACTOR TELESCOPE D60/F700 mm

Ideal for beginners. Comes with AZ2-Azimuth mount with fine adjustment, aluminum tripod, accessory mount 1¼". Tube length: 72 cm; weight: 3,5 kg.

Supplied with finder scope 5x24, 3 eyepieces SR4, H12,5 and H20, Barlow lens 2x, erecting eyepiece 1,5x, moon filter and diagonal mirror 90°.

Magnification: 35-350x (SR4/175x, H12,5/56x, H20/35x).



OPTIONALLY RECOMMENDED ACCESSORIES*:

- Photo adapter



WEGA 900

ACHROMATIC REFRACTOR TELESCOPE D70/F900 mm

Well configured telescope featuring a large focal length and an EQ-1 equatorial mount with solid aluminum tripod. Accessory mount 1¼".

Tube length: 90 cm; weight: 7 kg.

Supplied with finder scope 6x24, 2 eyepieces, Barlow lens 2x, moon filter and diagonal mirror 90°.

Magnification: 72-300x (H6/150x, H12,5/72x).

OPTIONALLY RECOMMENDED ACCESSORIES*:

- Further eyepieces
- Photo adapter
- Clock-Drive for EQ-1 Mount



JUPITER

ACHROMATIC REFRACTOR TELESCOPE D60/F700 mm

Portable telescope with AZ-2 Azimuth mount with aluminum tripod and micro height control. Accessory mount 1¼".

Tube length: 72 cm; weight: 3,8 kg.

Supplied with carrying case, finder scope 5x24, 3 eyepieces SR4, H12, H20, achromatic Barlow lens 2,3x, erecting eyepiece 1,5x, moon filter, diagonal mirror 90°.

Magnification: 35-400x (SR4/175x, H12,5/56x, H20/35x).

OPTIONALLY RECOMMENDED ACCESSORIES*:

- Photo adapter



Type	Colour	Mount	Lens-ø	Focal Length	Focal Ratio	Item No	GTIN13	MSRP €
Pluto		Azimuth	50 mm	600 mm	1 : 12	567056	4000461038792	69,00
Merkur 60A		AZ-2	60 mm	910 mm	1 : 15,2	567065	4000461019593	159,00
Mars 66		AZ-2	60 mm	700 mm	1 : 11,7	567067	4000461019586	119,00
Wega 900		EQ 1	70 mm	900 mm	1 : 12,9	567069	4000461038587	219,00
Jupiter		AZ-2	60 mm	700 mm	1 : 11,7	567070	4000461023040	149,00

*Optional accessories see page 53-55



Discover and photograph the beauty of the universe using a Danubia astro telescope. Fantastic pictures of the moon surface, planets, stars, star clusters and galaxies can be achieved.

We recommend the use of a DSLR camera. Pictures are taken without camera lens. The camera is connected to the telescope by a photo adapter* and a T2 adapter**. Long exposure times will be required. We therefore recommend the use of an equatorial mount and a clock drive. Once you have located the desired object with your telescope, you can start taking the picture.



*Optional accessories see page 53-55

** Available T2 adapters see page 30

EYEPIECES FOR ASTRO TELESCOPES

ASTRO ACCESSORIES

Essential for observations with astro telescopes. The shorter the focal length of the eyepiece, the higher the achievable magnification, depending of size and design of the telescope in use. Many popular telescopes feature a 1¼" eyepiece and accessory mount.



ZOOM EYEPIECE 1¼"

ZOOM EYEPIECE 7 - 21 mm

Variable magnification – especially recommended for terrestrial observation.

Eyepiece Type	Focal Length	Item No	GTIN13	MSRP €
Zoom Eyepiece	7 - 21 mm	566520	4000461038969	69,00



PLÖSSL EYEPIECES

Orthoscopic eyepieces, distortion-free, providing true colours and a high edge sharpness.

Eyepiece Type	Focal Length	Item No	GTIN13	MSRP €
Plössl	17 mm	566538	4000461039126	49,00
Plössl	25 mm	566539	4000461039133	49,00



EYEPIECES WITH FIRM FOCAL LENGTH 1¼"

KELLNER EYEPIECES

Fully coated wide angle eyepieces, 3 elements, providing true colours.

Eyepiece Type	Focal Length	Item No	GTIN13	MSRP €
Kellner	6,3mm	566509	4000461014482	35,00
Kellner	10 mm	566515	4000461014444	35,00
Kellner	17 mm	566519	4000461039515	35,00
Kellner	25 mm	566530	4000461014208	35,00



SUN FILTER FOIL

Mounts onto the telescope tube. The ND4 filter 99,99% of the sunlight; size 200 x 290 mm

Item No	GTIN13	MSRP €
9566023	4000461020179	25,00



MOON FILTER FOR 1 1/4" MOUNT

Enhances contrasts for moon observations for a better visibility of structures. To be screwed into eyepieces with 1 1/4" mount.

Item No	GTIN13	MSRP €
566506	4000461025136	19,90



566574



566575

BARLOW LENSES

Double or increase the magnification factor of the eyepiece and thus widen the possibilities of your telescope.

BARLOW LENS 2X FOR 1 1/4" MOUNT

Doubles the magnification factor of the eyepiece. Ideally complements eyepieces with longer focal length. Well suited for observations of the moon, planets and bright deep-sky objects.

ACHROMATIC BARLOW LENS 2x FOR 1 1/4" MOUNT AND PHOTO ADAPTER

Well suited for astro photography and observations of the moon, planets and bright deep-sky objects. Fitted with T2 screwmount for T2 adapter (read more on pages 30 + 52).

Use as photo adapter: to be plugged into the eyepiece mount of the telescope; using a T2 adapter, it connects to a mirrorless or DSLR camera.

Use as a barlow lens: to be plugged between eyepiece and telescope mount; doubles the magnification of the eyepiece.

Description	Item No	GTIN13	MSRP €
Barlow Lens 2x for 1 1/4" Mount	566574	4000461022135	29,00
Achromatic Barlow Lens 2x for 1 1/4" Mount and Photo Adapter	566575	4000461014468	65,00



566578



566577



566579

ERECT IMAGE EYEPIECES & DIAGONAL PRISMS

They turn the astro image from the telescope upright and right-way round, e.g. for terrestrial observations. Can be used with refractor and mirror telescopes.

Description	Item No	GTIN13	MSRP €
Erect Image 1,5x for 1 1/4" mount	566579	4000461018381	29,90
Erect Image Prism for Refractors 45° for 1 1/4" Mount Reversed astro image remains.	566577	4000461038891	65,00
Diagonal Prism for Refractors 90° for 1 1/4" Mount	566578	4000461039072	49,00



MOTOR DRIVES 6V FOR EQUATORIAL MOUNTS

For automatic and even tracking of the telescope for astro photography in 2 versions:

- Clock Drive for EQ-1, EQ-2 & EQ-3 for right ascension
- Dual axis clock drive for EQ-3 & EQ-5 for right ascension and declination

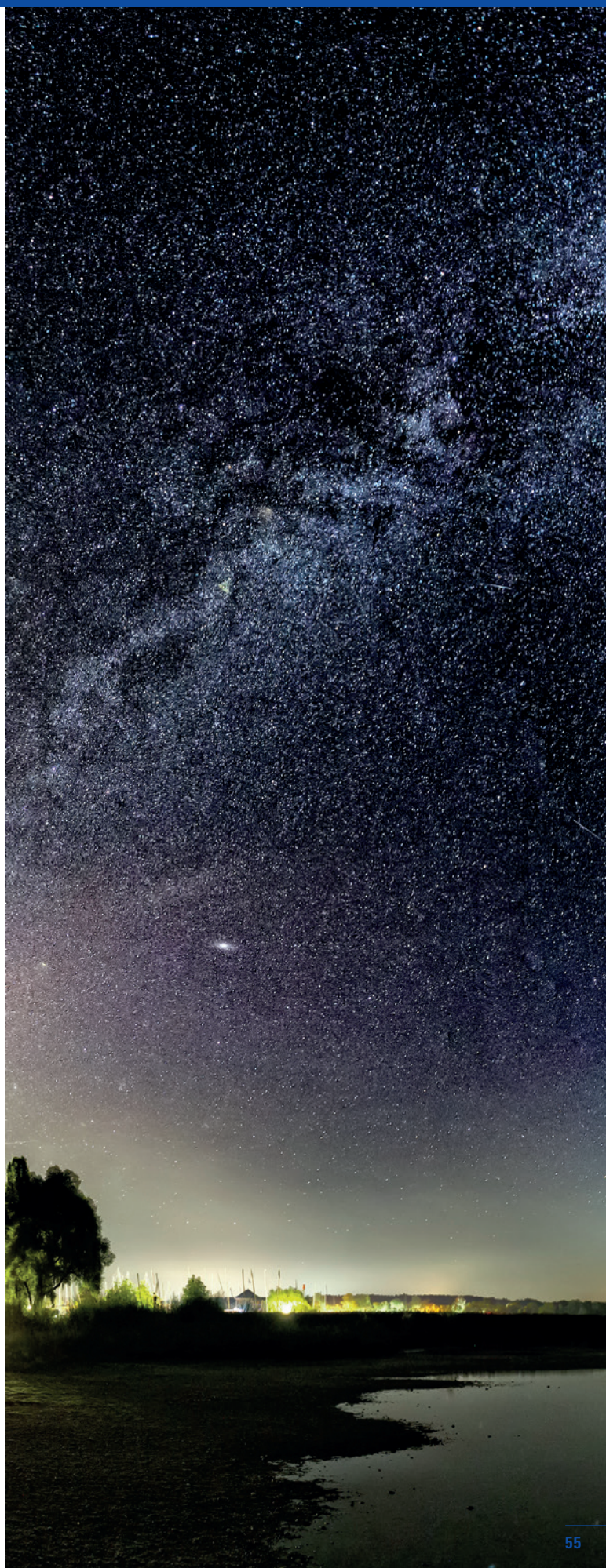
Eyepiece Type	Item No	GTIN13	MSRP €
Clock Drive for EQ-1 Mount	566593	4000461013942	69,00
Clock Drive for EQ-2 Mount	566595	4000461058165	69,00
Dual Axis Clock Drive for EQ-3 Mount	566612	4000461039157	149,00
Dual Axis Clock Drive for EQ-5 Mount	566621	4000461039164	159,00



FINDERSCOPE 6x30 WITH ILLUMINATION

The finderscope with illumination grants fast and precise orientation towards the observation object; the reticle can be illuminated. Supplied with support.

Item No	GTIN13	MSRP €
566310	4000461038990	99,00





DÖRR GmbH

Messerschmittstr. 1 D-89231 Neu-Ulm
Fon: +49 731 97037-0 Fax: +49 731 97037-37
info@doerrfoto.de doerrfoto.de
fb.com/doerrgmbh