

Mod. 2717HL.B E

2717HL – EXPLORER CASES, ULTRALIGHT WATERPROOF CASE

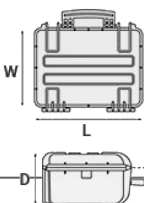
Small size watertight case injected with proprietary copolymer PP that makes it more resistant and lightweight than other similar products. IP67 and MIL Stan certified* to be resistant to impact, liquids, shocks. Ideal storage for documents, tablets, small electronic devices, tools and more.

- Metal reinforced padlock holes
- Single block high performance injected O-ring
- Automatic pressure valve
- Soft rubber handle grip
- Removable lid
- Anti-tilt support
- Certified to grant constant performances between -33°C and +90 °C.
- Six standard colors available

*Pending certification release

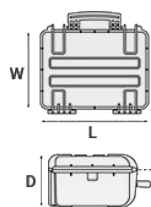


METRIC MM-KG-C°

	INTERNAL DIMENSIONS		EXTERNAL DIMENSIONS		OTHER DATA	
	L LENGTH	276 mm	L LENGTH	316 mm	WEIGHT EMPTY	1.62 Kg
	W WIDTH	200 mm	W WIDTH	270 mm	WEIGHT WITH FOAM	1.89 Kg
	D DEPTH	170 mm	D DEPTH	192 mm	WEIGHT WITH CUSTOM FOAM	Kg
	LID	35 mm			VOLUME	9.40 lt
	BASE	135 mm				

BUOYANCY 6.70 Kg/max
 OPERATING °C min -33 / max +90
 TEMPERATURE

IMPERIAL IN-LBS-F°



INTERNAL DIMENSIONS

L LENGTH 10 7/8 in
W WIDTH 7 7/8 in
D DEPTH 6 11/16 in
LID 1 3/8 in
BASE 5 5/16 in

EXTERNAL DIMENSIONS

L LENGTH 12 7/16 in
W WIDTH 10 5/8 in
D DEPTH 7 9/16 in

OTHER DATA

WEIGHT EMPTY 3.57 lbs
WEIGHT WITH FOAM 4.16 lbs
WEIGHT WITH CUSTOM lbs
FOAM
VOLUME 2.48 gal
BUOYANCY 14.77 lbs/max
OPERATING °F min -27.4 / max
TEMPERATURE +194

FEATURES



AUTOMATIC VALVE

Automatic pressure release valve.



CORROSION PROOF METAL HINGES WITH LID STAY FEATURES



INTERNAL SLOTS

Internal slots for optional panel mounting brackets or panel mounting rings



LATCH



SEALING O-RING

(Art. NEOSEAL + nr. art.)



PVC WATERPROOF I. D. REMOVABLE LABEL

(Art. LABELCOVER + nr. art.)



LID CAN BE SET TO SLIDE-OFF

By releasing the back screw, lid becomes set to slide-off when opened at 70°



COUNTERBALANCE SUPPORTS

(in certain models)

ACCESSORIES



PADDED DIVIDER FOR 2717

DIV2717

Padded dividers with internal adjustable partitions. Ideal to protect and transport any kind of sensitive equipment. Thanks to their modularity, they can be easily combined.



LID PANEL WITH ORGANIZED POUCHES

PANEXPL27

Practical and robust lid panel with pouches, ideal for small accessories and documents. Suitable for cases 2712 and 2717. Color: black.



PADDED BAG WITH ADJUSTABLE DIVIDERS

BAG-S

Highly durable padded bag with rubber coated handle and waterproof zipper with lockable Velcro pull zipper. Practical external front pouch for documents, removable shoulder strap and rubber feet on the bottom to grant better grip. Internal adjustable padded dividers for flexible configuration. Ideal to protect sensitive equipment (ie electronic, photographic, broadcasting, medical etc.). Suitable for case 2717. Color: black/red.



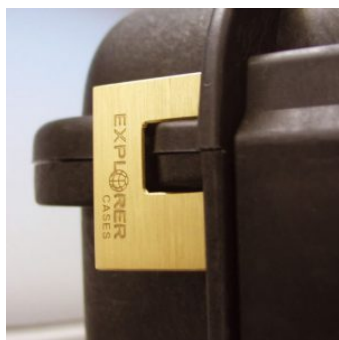
PANEL RING FOR CASE 2712 AND 2717

PANRING27.USA

Includes Imperial system fixing screws.

User friendly panel frames, they can be used to fix several kind of panels, from plastic to aluminum ones. Equipped with an additional gasket (which will be squeezed in between the panel and the frame) they can provide the case with a perfect instrumentation surface and a further humidity and dust resistance when the case is used in the field.

Completely removable, resistant and light, these panel rings help to transform the Explorer cases into practical workstations.



PATENTED HEAVY DUTY BRASS PADLOCK WITH KEYS

EXPL PADLOCK

Designed to fit snug to the Explorer case mould so as not to swing out



PATENTED COMBINATION PADLOCK

EXPL COMBILOCK

Designed to fit snug to the Explorer case mould so as not to swing out



BLIND INSERT

KIT.EXPL.PLUGS

Kit includes 6 pcs.

Whenever the slots are not going to be used for in-built applications, those can be closed by blind inserts that will give the case a better and finished interior look.



TSA APPROVED PADLOCK WITH COMBINATION

EXPL TSA.DIGILOCK

The new TSA approved padlocks allow tsa® airport security agents to open the case without destroying the lock. TSA agents are trained to recognize the travel sentry certified logo and should not break the case lock.



METAL BRACKET

KIT SUPP.EXPL.

Kit includes 6 pcs.

All models (except for the 1908) are internally equipped with specific slots, to apply the optional metal or plastic brackets which provide either a panel's fixing points or a fix mechanical joint inside the case, to build more complete applications. This way the case becomes a real workstation, rather than just a carrying container. As the panel mounting brackets are mechanically fixed by screws, they can be removed when necessary. The dedicated screws allow the case to remain waterproof, and help the panels to be removed easily and quickly



PLASTIC BRACKET

KIT SUPP.PLAST.

Kit includes 6 pcs.

All models (except for the 1908) are internally equipped with specific slots, to apply the optional metal or plastic brackets which provide either a panel's fixing points or a fix mechanical joint inside the case, to build more complete applications. This way the case becomes a real workstation, rather than just a carrying container. As the panel mounting brackets are mechanically fixed by screws, they can be removed when necessary. The dedicated screws allow the case to remain waterproof, and help the panels to be removed easily and quickly



FOAM SET FOR CASE 2717

FOAM.2717

Layers of pre cubed foam for the bottom and convoluted foam for the lid. The pre-cubed foam allows the user to tailor the insert to their own individual requirement. The convoluted foam in the lid helps to firmly keep the stored equipment when the case is closed. Available for 2717 model. Color: dark grey. [DOWNLOAD PDF](#)



CONVOLUTED FOAM SET FOR CASE 2712 AND 2717

LIDFOAM.27

(includes 2 pcs.)



PANEL RING FOR CASE 2712 AND 2717

PANRING27

Includes Metric system fixing screws.

User friendly panel frames, they can be used to fix several kind of panels, from plastic to aluminum ones. Equipped with an additional gasket (which will be squeezed in between the panel and the frame) they can provide the case with a perfect instrumentation surface and a further humidity and dust resistance when the case is used in the field.

Completely removable, resistant and light, these panel rings help to transform the Explorer cases into practical workstations.

SPARE PARTS



Polyurethane o-ring seal for models 2712 and 2717

KIN.0847

Includes:
1 o-ring



Name tag holder for mod. 2712-2717-3317-3317W-3818-5117-5122-MUB78

KIN.0496

Includes: 1 transparent name tag holder



Latch for models from 2712 to 3317W

KIN.0429

Includes: 1 military green latch 1 fixing pin



Latch for models from 2712 to 3317W

KIN.0439

Includes: 1 black latch 1 fixing pin



Latch for models from 2712 to 3317W

KIN.0437

Includes: 1 orange latch 1 fixing pin



Handle for model from 2712 to 3317W

KIN.0465

Includes: 1 military green handle 2 fixing pins



Handle for models from 2712 to 3317W

KIN.0475

Includes: 1 black handle 2 fixing pins



Handle for model from 2712 to 3317W

KIN.0473

Includes: 1 orange handle 2 fixing pins

