

## Mod. 3815HL.B

3815HL – EXPLORER CASES, ULTRALIGHT WATERPROOF CASE

Medium size watertight case injected with proprietary copolymer PP that makes it more resistant and lightweight than other similar products. IP67 and MIL Stan certified\* to be resistant to impact, liquids, shocks. Ideal container for documents, laptops, books, medical equipment and electronic devices, tools and more.


- Metal reinforced padlock holes
- Single block high performance injected O-ring
- Automatic pressure valve
- Soft rubber handle grip
- Removable lid
- Anti-tilt support
- Certified to grant constant performances between -33°C and +90 °C.
- Six standard colors available

\*Pending certification release



METRIC MM-KG-C°

IMPERIAL IN-LBS-F°

	INTERNAL DIMENSIONS		EXTERNAL DIMENSIONS		OTHER DATA	
	<b>L</b> LENGTH	14 15/16 in	<b>L</b> LENGTH	16 9/16 in	<b>WEIGHT EMPTY</b>	5.26 lbs
	<b>W</b> WIDTH	10 5/8 in	<b>W</b> WIDTH	13 3/8 in	<b>WEIGHT WITH FOAM</b>	6.08 lbs
	<b>D</b> DEPTH	6 1/8 in	<b>D</b> DEPTH	6 15/16 in	<b>WEIGHT WITH CUSTOM FOAM</b>	lbs
	<b>LID</b>	1 7/8 in			<b>VOLUME</b>	4.20 gal
	<b>BASE</b>	4 1/4 in			<b>BUOYANCY</b>	22.04 lbs/max
					<b>OPERATING TEMPERATURE</b>	°F min -27.4 / max +194

## FEATURES



### **AUTOMATIC VALVE**

Automatic pressure release valve.



### **CORROSION PROOF METAL HINGES WITH LID STAY FEATURES**



### **FIXING POINTS**

Additional fixing points on the lid, available on certain models



### **INTERNAL SLOTS**

Internal slots for optional panel mounting brackets or panel mounting rings



### JAM FREE LATCHES WITH EASY-OPENING MECHANISM

(from model 3818 on)



### PVC WATERPROOF I. D. REMOVABLE LABEL

(Art. LABELCOVER + nr. art.)



### SOFT GRIP RUBBER HANDLE

Load tested handle, reinforced with corrosion proof steel pins



### COUNTERBALANCE SUPPORTS

(in certain models)

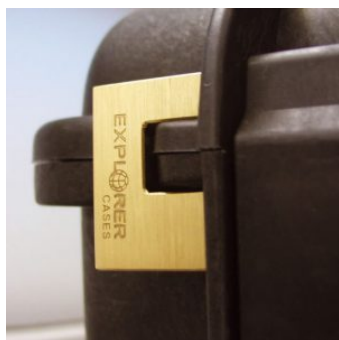
## ACCESSORIES



### PROTECTIVE SLEEVE FOR PC 13"-13.3"

TOP ENVELOPE 13

Protective padded notebook sleeve. Protects the laptop from shocks and scratches.



### PATENTED HEAVY DUTY BRASS PADLOCK WITH KEYS

EXPL PADLOCK

Designed to fit snug to the Explorer case mould so as not to swing out



### PATENTED COMBINATION PADLOCK

EXPL COMBILOCK

Designed to fit snug to the Explorer case mould so as not to swing out



### BLIND INSERT

KIT.EXPL.PLUGS

Kit includes 6 pcs.

Whenever the slots are not going to be used for in-built applications, those can be closed by blind inserts that will give the case a better and finished interior look.



### TSA APPROVED PADLOCK WITH COMBINATION

EXPL TSA.DIGILOCK

The new TSA approved padlocks allow tsa® airport security agents to open the case without destroying the lock. TSA agents are trained to recognize the travel sentry certified logo and should not break the case lock.



### METAL BRACKET

KIT SUPP.EXPL.

Kit includes 6 pcs.

All models (except for the 1908) are internally equipped with specific slots, to apply the optional metal or plastic brackets which provide either a panel's fixing points or a fix mechanical joint inside the case, to build more complete applications. This way the case becomes a real workstation, rather than just a carrying container. As the panel mounting brackets are mechanically fixed by screws, they can be removed when necessary. The dedicated screws allow the case to remain waterproof, and help the panels to be removed easily and quickly



### PLASTIC BRACKET

KIT SUPP.PLAST.

Kit includes 6 pcs.

All models (except for the 1908) are internally equipped with specific slots, to apply the optional metal or plastic brackets which provide either a panel's fixing points or a fix mechanical joint inside the case, to build more complete applications. This way the case becomes a real workstation, rather than just a carrying container. As the panel mounting brackets are mechanically fixed by screws, they can be removed when necessary. The dedicated screws allow the case to remain waterproof, and help the panels to be removed easily and quickly



### HANDY BACKPACK CARRYING SYSTEM FOR CASES

BACKPACK M

Made of robust tear resistant polyester. Designed with adjustable and comfortable padded shoulder straps and belt.

Provided with an external pocket for small accessories, with Velcro strap.

Ideal wherever a free hand movement is required, like in outdoor activities, extreme sports, emergency, rescue, trekking, industrial field, etc.

Suitable for models 3317, 3818 and 5117.

Color: black.





## SPARE PARTS



### Rubber coated handle for mod. 3818-4412-4419-5117-5122

KIN.0479

Includes: 1 black handle 2 fixing pins



### Rubber coated handle for models 3818-4412-4419-5117-5122

KIN.0469

Includes: 1 military green handle 2 fixing pins



### Name tag holder for mod. 2712-2717-3317-3317W-3818-5117-5122-MUB78

KIN.0496

Includes: 1 transparent name tag holder



### Easy-opening latch for models from 3818 up

KIN.0446

Includes:  
1 black latch  
1 fixing pin





### Easy-opening latch for models from 3818 up

KIN.0435

Includes:  
1 military green latch  
1 fixing pin



### Easy-opening latch for models from 3818 up

KIN.0434

Includes:  
1 orange latch  
1 fixing pin



### Rubber coated handle for models 3818-4412-4419-5117-5122

KIN.0468

Includes: 1 orange handle 2 fixing pins



### Polyurethane o-ring seal for model 3818

KIN.0849

Includes:  
1 o-ring



## Easy-opening latch for models from 3818 up

KIN.0883

Includes:

1 sand latch

1 fixing pin