

## Mod. 4412HL.B

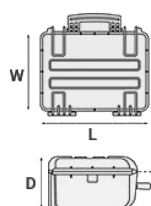
4412HL – EXPLORER CASES, ULTRALIGHT WATERPROOF CASE

Medium size watertight case, injected with proprietary copolymer PP that makes it more resistant and lightweight than other similar products. IP67 and MIL Stan certified to be resistant to impact, liquids, shocks. Ideal container for mechanical equipment, optical equipment and electronic devices, valuables, emergency kits and more. Can be used as a portable work station.

- Metal reinforced padlock holes
- Single block high performance injected O-ring
- Automatic pressure valve
- Soft rubber handle grip
- Removable lid
- Anti-tilt support
- Certified to grant constant performances between -33°C and +90 °C.
- Six standard colors available



METRIC MM-KG-C°



### INTERNAL DIMENSIONS

<b>L</b> LENGTH	445 mm
<b>W</b> WIDTH	345 mm
<b>D</b> DEPTH	125 mm
<b>LID</b>	47 mm
<b>BASE</b>	78 mm

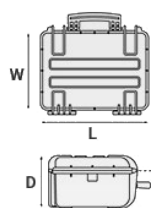
### EXTERNAL DIMENSIONS

<b>L</b> LENGTH	485 mm
<b>W</b> WIDTH	414 mm
<b>D</b> DEPTH	149 mm

### OTHER DATA

<b>WEIGHT EMPTY</b>	2.67 Kg
<b>WEIGHT WITH FOAM</b>	3.17 Kg
<b>WEIGHT WITH CUSTOM FOAM</b>	3.47 Kg
<b>VOLUME</b>	19.20 lt
<b>BUOYANCY</b>	10.80 Kg/max
<b>OPERATING TEMPERATURE</b>	°C min -33 / max +90

IMPERIAL IN-LBS-F°



#### INTERNAL DIMENSIONS

<b>L LENGTH</b>	17 1/2 in
<b>W WIDTH</b>	13 9/16 in
<b>D DEPTH</b>	4 15/16 in
<b>LID</b>	1 7/8 in
<b>BASE</b>	3 1/16 in

#### EXTERNAL DIMENSIONS

<b>L LENGTH</b>	19 1/8 in
<b>W WIDTH</b>	16 5/16 in
<b>D DEPTH</b>	5 7/8 in

#### OTHER DATA

<b>WEIGHT EMPTY</b>	5.88 lbs
<b>WEIGHT WITH FOAM</b>	6.98 lbs
<b>WEIGHT WITH CUSTOM FOAM</b>	7.65 lbs
<b>VOLUME</b>	5.07 gal
<b>BUOYANCY</b>	23.80 lbs/max
<b>OPERATING TEMPERATURE</b>	°F min -27.4 / max +194

## FEATURES



### **AUTOMATIC VALVE**

Automatic pressure release valve.



### **INTERNAL SLOTS**

Internal slots for optional panel mounting brackets or panel mounting rings



### **JAM FREE LATCHES WITH EASY-OPENING MECHANISM**

(from model 3818 on)



### **PVC WATERPROOF I. D. REMOVABLE LABEL**

(Art. LABELCOVER + nr. art.)



### **LID CAN BE SET TO SLIDE-OFF**

By releasing the back screw, lid becomes set to slide-off when opened at 70°



### **STAINLESS STEEL REINFORCED PADLOCKABLE POINTS**

4 stainless steel clip-covers on the two frontal outer padlock points, to grant a better resistance to abrasion.



### **ABILITY TO STACK**

The special design of the bottom and the lid feet, grants a perfect stackability.

## ACCESSORIES



### PROTECTIVE SLEEVE FOR PC 15"-15.6"

TOP ENVELOPE 15

Protective padded notebook sleeve. Protects the laptop from shocks and scratches.



### PROTECTIVE SLEEVE FOR PC 13"-13.3"

TOP ENVELOPE 13

Protective padded notebook sleeve. Protects the laptop from shocks and scratches.



### PADDED GUN BAG FOR CASE 4412

GBAG 44

Padded gunbag to protect SMG guns. Inclusive of a number of features to secure rifles and shotguns together with necessary accessories and ammunitions. GBAG 44 is designed to perfectly fit into Explorer Cases models 4412 (1 piece). The gunbag is built with durable, 600D tear resistant polyester and robust zipper with lockable Velcro pull zipper. Designed to protect and transport critical gear. This gun bag comes with a removable shoulder strap. Personal ID window on the backside and front removable hook-and-loop screen-printable band.



### TOP COVER FOR DIV4412 AND DIV4419

COV44

Top covers available for larger models: they can be easily fixed on the dividers by Velcro strips. Ideal to protect and keep items in place.



## PADDED DIVIDER FOR 4412

DIV4412

Padded dividers with internal adjustable partitions. Ideal to protect and transport any kind of sensitive equipment. Thanks to their modularity, they can be easily combined.



## LAPTOP PADDED BAG

BAG-PC44

Highly durable padded bag with rubber coated handle and waterproof zipper with lockable Velcro pull zipper. Practical external front pouch for documents, removable shoulder strap and rubber feet on the bottom to grant better grip. Provided with internal cable pouch. Ideal for laptop up to 15". Suitable for case 4412. Color: black/red.



## LID PANEL WITH ORGANIZED POUCHES

PANEXPL44

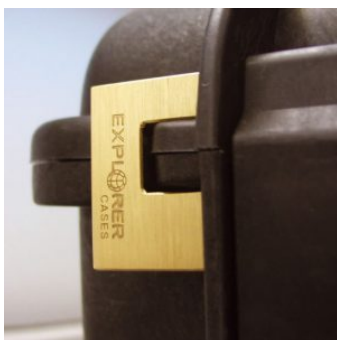
Practical and robust lid panel with pouches, ideal for small accessories and documents. Suitable for cases 4412 and 4419. Color: black.



## ADJUSTABLE SHOULDER KIT

SHOULDERKIT.U

The kit is composed by: shoulder strap with plastic endings, 4 threaded knots, 2 metal plates. (min. extension 106 cm, max. extension 201 cm). The strap comes with the Explorer logo. Suitable for models: 1908, 1913, 2209, 2214, 3005, 4412, 4419, 5117, 9413, 11413 and 13513.



### **PATENTED HEAVY DUTY BRASS PADLOCK WITH KEYS**

EXPL PADLOCK

Designed to fit snug to the Explorer case mould so as not to swing out



### **PATENTED COMBINATION PADLOCK**

EXPL COMBILOCK

Designed to fit snug to the Explorer case mould so as not to swing out



### **HANDY BACKPACK CARRYING SYSTEM FOR CASES**

BACKPACK L

Made of robust tear resistant polyester. Designed with adjustable and comfortable padded shoulder straps and belt.

Provided with an external pocket for small accessories, with Velcro strap.

Ideal wherever a free hand movement is required, like in outdoor activities, extreme sports, emergency, rescue, trekking, industrial field, etc.

Suitable for models 3317W, 4412, 4419 and 4820.

Color: black.



### **BLIND INSERT**

KIT.EXPL.PLUGS

Kit includes 6 pcs.

Whenever the slots are not going to be used for in-built applications, those can be closed by blind inserts that will give the case a better and finished interior look.





### **TSA APPROVED PADLOCK WITH COMBINATION**

EXPL TSA.DIGILOCK

The new TSA approved padlocks allow tsa® airport security agents to open the case without destroying the lock. TSA agents are trained to recognize the travel sentry certified logo and should not break the case lock.



### **METAL BRACKET**

KIT SUPP.EXPL.

Kit includes 6 pcs.

All models (except for the 1908) are internally equipped with specific slots, to apply the optional metal or plastic brackets which provide either a panel's fixing points or a fix mechanical joint inside the case, to build more complete applications. This way the case becomes a real workstation, rather than just a carrying container. As the panel mounting brackets are mechanically fixed by screws, they can be removed when necessary. The dedicated screws allow the case to remain waterproof, and help the panels to be removed easily and quickly



### **PLASTIC BRACKET**

KIT SUPP.PLAST.

Kit includes 6 pcs.

All models (except for the 1908) are internally equipped with specific slots, to apply the optional metal or plastic brackets which provide either a panel's fixing points or a fix mechanical joint inside the case, to build more complete applications. This way the case becomes a real workstation, rather than just a carrying container. As the panel mounting brackets are mechanically fixed by screws, they can be removed when necessary. The dedicated screws allow the case to remain waterproof, and help the panels to be removed easily and quickly



### **PANEL RING FOR CASE 4412 AND 4419**

PANRING44

Includes Metric system fixing screws.

User friendly panel frames, they can be used to fix several kind of panels, from plastic to aluminum ones. Equipped with an additional gasket (which will be squeezed in between the panel and the frame) they can provide the case with a perfect instrumentation surface and a further humidity and dust resistance when the case is used in the field.

Completely removable, resistant and light, these panel rings help to transform the Explorer cases into practical workstations.



### CONVOLUTED FOAM SET FOR CASE 4412 AND 4419

LIDFOAM.44

(includes 2 pcs.)



### FOAM SET FOR CASE 4412

FOAM.4412

Layers of pre cubed foam for the bottom and convoluted foam for the lid. The pre-cubed foam allows the user to tailor the insert to their own individual requirement. The convoluted foam in the lid helps to firmly keep the stored equipment when the case is closed. Available for 4412 model. Color: dark grey. [DOWNLOAD PDF](#)



### PANEL RING FOR CASE 4412 AND 4419

PANRING44.USA

Includes Imperial system fixing screws.

User friendly panel frames, they can be used to fix several kind of panels, from plastic to aluminum ones. Equipped with an additional gasket (which will be squeezed in between the panel and the frame) they can provide the case with a perfect instrumentation surface and a further humidity and dust resistance when the case is used in the field.

Completely removable, resistant and light, these panel rings help to transform the Explorer cases into practical workstations.



## SPARE PARTS



**Metal clips for mod.**

**3005-4209-16-4412-19-4820-5140-5218-21-5325-26-5822-23-33-762  
6-30-35-41-7726-45-7814-9413-33-10826-40-11413-13513-27-15416**

KIN.1214

Includes: 4 metal reinforcements



KIN.0969

**Transparent PC name tag for mod.**

**4209-4216-4412-4419-4820-5218-5221-5325-5326-5822-5823-5833-  
7626-7630-7635-7641-7726-7745-7814-9413-9433-10826-10840-114  
13-13513-13527-15416-MUB65**

KIN.0969

Includes: 1 transparent name tag holder



KIN.0479

**Rubber coated handle for mod. 3818-4412-4419-5117-5122**

KIN.0479

Includes: 1 black handle 2 fixing pins



KIN.0469

**Rubber coated handle for models 3818-4412-4419-5117-5122**

KIN.0469

Includes: 1 military green handle 2 fixing pins



### Easy-opening latch for models from 3818 up

KIN.0446

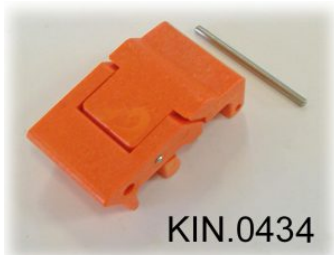
Includes:  
1 black latch  
1 fixing pin



### Easy-opening latch for models from 3818 up

KIN.0435

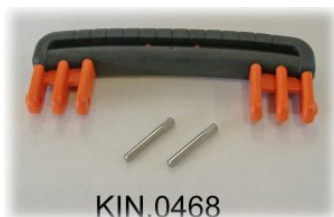
Includes:  
1 military green latch  
1 fixing pin



### Easy-opening latch for models from 3818 up

KIN.0434

Includes:  
1 orange latch  
1 fixing pin



### Rubber coated handle for models 3818-4412-4419-5117-5122

KIN.0468

Includes: 1 orange handle 2 fixing pins



### Polyurethane o-ring seal for models 4412 and 4419

KIN.0850

Includes: 1 o-ring



### Easy-opening latch for models from 3818 up

KIN.0883

Includes:

1 sand latch

1 fixing pin