

Mod. 4820HL.B E

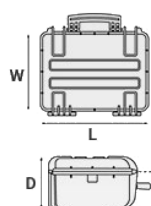
4820HL – EXPLORER CASES, ULTRALIGHT WATERPROOF CASE

Medium size watertight case, injected with proprietary copolymer PP that makes it more resistant and lightweight than other similar products. IP67 and MIL Stan certified to be resistant to impact, liquids, shocks. Ideal container for travel gear, photographic and video equipment, valuables, outdoor equipment and more.

- Metal reinforced padlock holes
- Single block high performance injected O-ring
- Automatic pressure valve
- Soft rubber handle grip
- Certified to grant constant performances between -33°C and +90 °C.
- Six standard colors available



METRIC MM-KG-C°



INTERNAL DIMENSIONS

L LENGTH	480 mm
W WIDTH	370 mm
D DEPTH	205 mm
LID	50 mm
BASE	155 mm

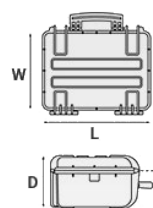
EXTERNAL DIMENSIONS

L LENGTH	520 mm
W WIDTH	440 mm
D DEPTH	230 mm

OTHER DATA

WEIGHT EMPTY	3.33 Kg
WEIGHT WITH FOAM	4.09 Kg
WEIGHT WITH CUSTOM FOAM	Kg
VOLUME	36.40 lt
BUOYANCY	24.80 Kg/max
OPERATING TEMPERATURE	°C min -33 / max +90

IMPERIAL IN-LBS-F°



INTERNAL DIMENSIONS

L LENGTH	18 7/8 in
W WIDTH	14 9/16 in
D DEPTH	8 1/16 in
LID	1 15/16 in
BASE	6 1/8 in

EXTERNAL DIMENSIONS

L LENGTH	20 1/2 in
W WIDTH	17 5/16 in
D DEPTH	9 1/16 in

OTHER DATA

WEIGHT EMPTY	7.34 lbs
WEIGHT WITH FOAM	9.01 lbs
WEIGHT WITH CUSTOM FOAM	lbs
VOLUME	9.61 gal
BUOYANCY	54.67 lbs/max
OPERATING TEMPERATURE	°F min -27.4 / max +194

FEATURES



AUTOMATIC VALVE

Automatic pressure release valve.



CORROSION PROOF METAL HINGES WITH LID STAY FEATURES



FIXING POINTS

Additional fixing points on the lid, available on certain models



INTERNAL SLOTS

Internal slots for optional panel mounting brackets or panel mounting rings



JAM FREE LATCHES WITH EASY-OPENING MECHANISM

(from model 3818 on)



SEALING O-RING

(Art. NEOSEAL + nr. art.)



PVC WATERPROOF I. D. REMOVABLE LABEL

(Art. LABELCOVER + nr. art.)



SOFT GRIP RUBBER HANDLE

Load tested handle, reinforced with corrosion proof steel pins

ACCESSORIES



PROTECTIVE SLEEVE FOR PC 15"-15.6"

TOP ENVELOPE 15

Protective padded notebook sleeve. Protects the laptop from shocks and scratches.



PROTECTIVE SLEEVE FOR PC 13"-13.3"

TOP ENVELOPE 13

Protective padded notebook sleeve. Protects the laptop from shocks and scratches.



TOP COVER FOR DIV4820-DIV7630 AND DIV7641

COV48-76

Top covers available for larger models: they can be easily fixed on the dividers by Velcro strips. Ideal to protect and keep items in place.



PADDED DIVIDER FOR 4820

DIV4820

Padded dividers with internal adjustable partitions. Ideal to protect and transport any kind of sensitive equipment. Thanks to their modularity, they can be easily combined.



PADDED BAG WITH ADJUSTABLE DIVIDERS

BAG-F

Highly durable padded bag with rubber coated handle and waterproof zipper with lockable Velcro pull zipper. Practical external front pouch for documents, removable shoulder strap and rubber feet on the bottom to grant better grip. Internal adjustable padded dividers for flexible configuration. Ideal to protect sensitive equipment (ie electronic, photographic, broadcasting, medical etc.). Suitable for case 4820. Color: black/red.



SPLITTABLE PADDED PC AND DIVIDERS BAG

BAG-PC48

Highly durable, splittable padded bag with rubber coated double handle and waterproof zippers with lockable Velcro pull zipper. Practical external front pouch for documents, removable shoulder strap and rubber feet on the bottom to grant better grip. Ideal for both laptop (up to 17") and photographic equipment (internal adjustable padded dividers for flexible configuration). Provided with two internal cable pouches. Suitable for case 4820. Color: black/red.



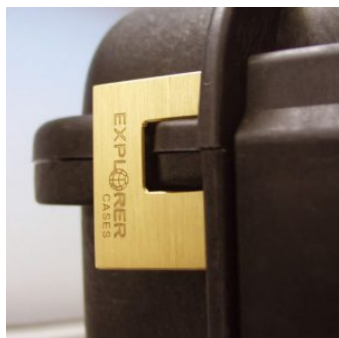
LID PANEL WITH ORGANIZED POUCHES

PANEXPL48

Practical and robust lid panel with pouches, ideal for small accessories and documents. Suitable for case 4820. Color: black.



FIXING
KIT
INCLUDED



PATENTED HEAVY DUTY BRASS PADLOCK WITH KEYS

EXPL PADLOCK

Designed to fit snug to the Explorer case mould so as not to swing out



PATENTED COMBINATION PADLOCK

EXPL COMBILOCK

Designed to fit snug to the Explorer case mould so as not to swing out



HANDY BACKPACK CARRYING SYSTEM FOR CASES

BACKPACK L

Made of robust tear resistant polyester. Designed with adjustable and comfortable padded shoulder straps and belt.

Provided with an external pocket for small accessories, with Velcro strap.

Ideal wherever a free hand movement is required, like in outdoor activities, extreme sports, emergency, rescue, trekking, industrial field, etc.

Suitable for models 3317W, 4412, 4419 and 4820.

Color: black.



BLIND INSERT

KIT.EXPL.PLUGS

Kit includes 6 pcs.

Whenever the slots are not going to be used for in-built applications, those can be closed by blind inserts that will give the case a better and finished interior look.



TSA APPROVED PADLOCK WITH COMBINATION

EXPL TSA.DIGILOCK

The new TSA approved padlocks allow tsa® airport security agents to open the case without destroying the lock. TSA agents are trained to recognize the travel sentry certified logo and should not break the case lock.



METAL BRACKET

KIT SUPP.EXPL.

Kit includes 6 pcs.

All models (except for the 1908) are internally equipped with specific slots, to apply the optional metal or plastic brackets which provide either a panel's fixing points or a fix mechanical joint inside the case, to build more complete applications. This way the case becomes a real workstation, rather than just a carrying container. As the panel mounting brackets are mechanically fixed by screws, they can be removed when necessary. The dedicated screws allow the case to remain waterproof, and help the panels to be removed easily and quickly



PLASTIC BRACKET

KIT SUPP.PLAST.

Kit includes 6 pcs.

All models (except for the 1908) are internally equipped with specific slots, to apply the optional metal or plastic brackets which provide either a panel's fixing points or a fix mechanical joint inside the case, to build more complete applications. This way the case becomes a real workstation, rather than just a carrying container. As the panel mounting brackets are mechanically fixed by screws, they can be removed when necessary. The dedicated screws allow the case to remain waterproof, and help the panels to be removed easily and quickly



PANEL RING FOR CASE 4820

PANRING48

Includes Metric system fixing screws.

User friendly panel frames, they can be used to fix several kind of panels, from plastic to aluminum ones. Equipped with an additional gasket (which will be squeezed in between the panel and the frame) they can provide the case with a perfect instrumentation surface and a further humidity and dust resistance when the case is used in the field.

Completely removable, resistant and light, these panel rings help to transform the Explorer cases into practical workstations.



CONVOLUTED FOAM SET FOR CASE 4820

LIDFOAM.48

(includes 2 pcs.)



FOAM SET FOR CASE 4820

FOAM.4820

Layers of pre cubed foam for the bottom and convoluted foam for the lid. The pre-cubed foam allows the user to tailor the insert to their own individual requirement. The convoluted foam in the lid helps to firmly keep the stored equipment when the case is closed. Available for 4820 model. Color: dark grey. [DOWNLOAD PDF](#)



PANEL RING FOR CASE 4820

PANRING48.USA

Includes Imperial system fixing screws.

User friendly panel frames, they can be used to fix several kind of panels, from plastic to aluminum ones. Equipped with an additional gasket (which will be squeezed in between the panel and the frame) they can provide the case with a perfect instrumentation surface and a further humidity and dust resistance when the case is used in the field.

Completely removable, resistant and light, these panel rings help to transform the Explorer cases into practical workstations.

SPARE PARTS



Metal clips for mod.

**3005-4209-16-4412-19-4820-5140-5218-21-5325-26-5822-23-33-762
6-30-35-41-7726-45-7814-9413-33-10826-40-11413-13513-27-15416**

KIN.1214

Includes: 4 metal reinforcements



KIN.0969

Transparent PC name tag for mod.

**4209-4216-4412-4419-4820-5218-5221-5325-5326-5822-5823-5833-
7626-7630-7635-7641-7726-7745-7814-9413-9433-10826-10840-114
13-13513-13527-15416-MUB65**

KIN.0969

Includes: 1 transparent name tag holder



KIN.0540

Rubber coated handle for models 4820-5325-5326-5822-5823-5833

KIN.0540

Includes: 1 orange handle 2 fixing pins



KIN.0542

Rubber coated handle for models 4820-5325-5326-5822-5823-5833

KIN.0542

Includes: 1 black handle 2 fixing pins



Easy-opening latch for models from 3818 up

KIN.0446

Includes:
1 black latch
1 fixing pin



Easy-opening latch for models from 3818 up

KIN.0435

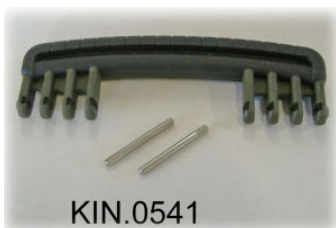
Includes:
1 military green latch
1 fixing pin



Easy-opening latch for models from 3818 up

KIN.0434

Includes:
1 orange latch
1 fixing pin



Rubber coated handle for models 4820-5325-5326-5822-5823-5833

KIN.0541

Includes: 1 military green handle 2 fixing pins



Polyurethane o-ring seal for model 4820

KIN.0851

Includes:
1 o-ring



Easy-opening latch for models from 3818 up

KIN.0883

Includes:
1 sand latch
1 fixing pin