

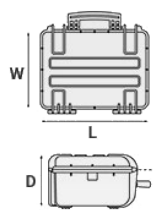
Mod. 13527.B

COPOLYMER POLYPROPYLENE WATERPROOF CASE

Double depth waterproof cases to accommodate lighting instrumentation and rifles. Customized high density foam inlets. Nato stock number (NSN). Six wheels and padlockable points. Wheels with bearings.



METRIC MM-KG-C°



INTERNAL DIMENSIONS

L LENGTH	1350 mm
W WIDTH	350 mm
D DEPTH	272 mm
LID	42 mm
BASE	230 mm

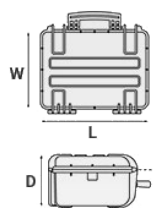
EXTERNAL DIMENSIONS

L LENGTH	1430 mm
W WIDTH	415 mm
D DEPTH	296 mm

OTHER DATA

WEIGHT EMPTY	11.70 Kg
WEIGHT WITH FOAM	14.90 Kg
WEIGHT WITH CUSTOM FOAM	Kg
VOLUME	128.50 lt
BUOYANCY	97.50 Kg/max
OPERATING TEMPERATURE	°C min -33 / max +90

IMPERIAL IN-LBS-F°



INTERNAL DIMENSIONS

L LENGTH	53 1/8 in
W WIDTH	13 3/4 in
D DEPTH	10 11/16 in
LID	1 5/8 in
BASE	9 1/16 in

EXTERNAL DIMENSIONS

L LENGTH	56 5/16 in
W WIDTH	16 5/16 in
D DEPTH	11 5/8 in

OTHER DATA

WEIGHT EMPTY	25.79 lbs
WEIGHT WITH FOAM	32.84 lbs
WEIGHT WITH CUSTOM FOAM	lbs
VOLUME	33.94 gal
BUOYANCY	214.95 lbs/max
OPERATING TEMPERATURE	°F min -27.4 / max

FEATURES



AUTOMATIC VALVE

Automatic pressure release valve.



6 WHEELS WITH BEARINGS (model 13527)



CORROSION PROOF METAL HINGES WITH LID STAY FEATURES



INTERNAL SLOTS

Internal slots for optional panel mounting brackets or panel mounting rings

LARGE FRONT HANDLE



JAM FREE LATCHES WITH EASY-OPENING MECHANISM

(from model 3818 on)



SEALING O-RING

(Art. NEOSEAL + nr. art.)



PVC WATERPROOF I. D. REMOVABLE LABEL

(Art. LABELCOVER + nr. art.)





TWO MAN LIFT SIDE HANDLES

ACCESSORIES



PADDED GUN BAG FOR CASES 13513-13527

GSLEEVE 135

Designed to secure your valuable rifle and accessories, the new G Sleeve bags provide protection in a highly mobile condition. A lightweight ruggedized 600D polyester outer fabric protects from humidity, while a padded interior keeps your rifle well protected. The internal rifle retention straps and the neoprene side flaps keep your firearm properly fixed.



PROTECTIVE SLEEVE FOR PC 15"-15.6"

TOP ENVELOPE 15

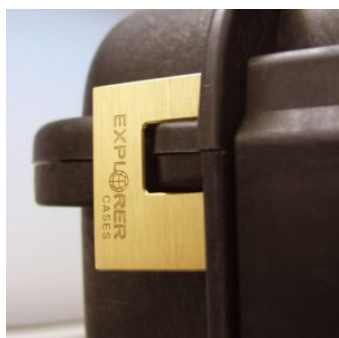
Protective padded notebook sleeve. Protects the laptop from shocks and scratches.



PROTECTIVE SLEEVE FOR PC 13"-13.3"

TOP ENVELOPE 13

Protective padded notebook sleeve. Protects the laptop from shocks and scratches.



PATENTED HEAVY DUTY BRASS PADLOCK WITH KEYS

EXPL PADLOCK

Designed to fit snug to the Explorer case mould so as not to swing out



DIGITAL LOCK FOR CASES 9413, 9433, 11413, 13513, 13527, 15416, 10826 AND 10840

KIT.DL

Kit includes 2 pcs.



PATENTED COMBINATION PADLOCK

EXPL COMBILOCK

Designed to fit snug to the Explorer case mould so as not to swing out



BLIND INSERT

KIT.EXPL.PLUGS

Kit includes 6 pcs. Whenever the slots are not going to be used for in-built applications, those can be closed by blind inserts that will give the case a better and finished interior look.



TSA APPROVED PADLOCK WITH COMBINATION

EXPL TSA.DIGILOCK

The new TSA approved padlocks allow tsa® airport security agents to open the case without destroying the lock. TSA agents are trained to recognize the travel sentry certified logo and should not break the case lock.



METAL BRACKET

KIT SUPP.EXPL.

Kit includes 6 pcs. All models (except for the 1908) are internally equipped with specific slots, to apply the optional metal or plastic brackets which provide either a panel's fixing points or a fix mechanical joint inside the case, to build more complete applications. This way the case becomes a real workstation, rather than just a carrying container. As the panel mounting brackets are mechanically fixed by screws, they can be removed when necessary. The dedicated screws allow the case to remain waterproof, and help the panels to be removed easily and quickly



FOAM SET FOR CASE 13527

FOAM.13527

Layers of pre cubed foam for the bottom and convoluted foam for the lid. The pre-cubed foam allows the user to tailor the insert to their own individual requirement. The convoluted foam in the lid helps to firmly keep the stored equipment when the case is closed. Available for 13527 model. Color: dark grey. [DOWNLOAD PDF](#)



PLASTIC BRACKET

KIT SUPP.PLAST.

Kit includes 6 pcs. All models (except for the 1908) are internally equipped with specific slots, to apply the optional metal or plastic brackets which provide either a panel's fixing points or a fix mechanical joint inside the case, to build more complete applications. This way the case becomes a real workstation, rather than just a carrying container. As the panel mounting brackets are mechanically fixed by screws, they can be removed when necessary. The dedicated screws allow the case to remain waterproof, and help the panels to be removed easily and quickly



CONVOLUTED FOAM SET FOR CASE 13513 AND 13527

LIDFOAM.135

(includes 2 pcs.)



PADDED GUN BAG FOR CASE 13513 AND 13527

GBAG 135

Padded gunbag to protect long guns. Inclusive of a number of features to secure rifles and shotguns together with necessary accessories and ammunitions. GBAG 135 is designed to perfectly fit into Explorer Cases models 13513 and 13527 (up to two pieces). The gunbag is built with durable, 600D tear resistant polyester and robust zipper with lockable Velcro pull zipper for the main compartment. The main compartment features two neoprene hook-and-loop side flaps and adjustable straps to secure firearms. The front central compartment is equipped with adjustable interior straps to secure rifle position. The two side smaller pouches are designed to storage accessories and ammunitions. Both the main and front compartments are padded on all sides to protect and transport critical gear. This long gun bag features top and bottom compression straps and come with a removable shoulder strap. Personal ID window on the backside and front removable hook-and-loop screen-printable band. **Full-opening zipper for shooting mat configuration.** The gunbag can easily become a backpack by fixing the BACKPACK KIT in its rear side (see BACKPACK KIT accessory in BACKPACK SYSTEMS section for more details).

SPARE PARTS



Metal clips for mod.

**3005-4209-16-4412-19-4820-5140-5218-21-5325-26-5822-23-33-762
6-30-35-41-7726-45-7814-9413-33-10826-40-11413-13513-27-15416**

KIN.1214

Includes: 4 metal reinforcements



Grey trigger pull release latch for models

7814-9413-9433-11413-13513-13527

KIN.1283

Includes: 1 black latch 1 fixing pin



Side handle for mod.

5822-5823-5833-7626-7630-7635-7641-7726-7745-13513-13527

KIN.1370

Includes: 1 orange handle 2 fixing pins



Side handle for mod.

5822-5823-5833-7626-7630-7635-7641-7726-7745-13513-13527

KIN.1368

Includes: 1 military green handle 2 fixing pins

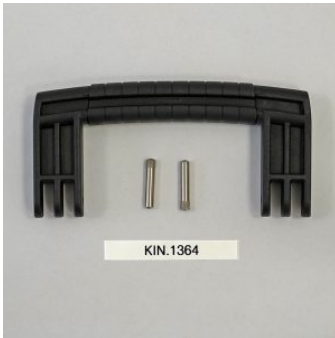


Side handle for mod.

5822-5823-5833-7626-7630-7635-7641-7726-7745-13513-13527

KIN.1366

Includes: 1 desert tan handle 2 fixing pins



Side handle for mod.

5822-5823-5833-7626-7630-7635-7641-7726-7745-13513-13527

KIN.1364

Includes: 1 black handle 2 fixing pins



Transparent PC name tag for mod.

4209-4216-4412-4419-4820-5218-5221-5325-5326-5822-5823-5833-7626-7630-7635-7641-7726-7745-7814-9413-9433-10826-10840-11413-13513-13527-15416-MUB65

KIN.0969

Includes: 1 transparent name tag holder



Side handle for models

5325-5326-5822-5823-5833-7630-7814-13513-13527-15416

KIN.0426

Includes: 1 orange handle 2 fixing pins



Side handle for models

5325-5326-5822-5823-5833-7630-7814-13513-13527-15416

KIN.0880

Includes: 1 sand handle 2 fixing pins



Side handle for models

5325-5326-5822-5823-5833-7630-7814-13513-13527-15416

KIN.0412

Includes: 1 black handle 2 fixing pins



Handle for mod.

7630-7726-7745-11413-13513-13527-15416-10826-10840-MUB78

KIN.0425

Includes: 1 black handle 2 fixing pins



Handle for mod.

7630-7726-7745-11413-13513-13527-15416-10826-10840-MUB78

KIN.0881

Includes: 1 sand handle 2 fixing pins



Wheels for model 13527

KIN.0543

Includes:
6 wheels with bearings
2 snap rings (Seeger)
2 fixing pins



Side handle for models

5325-5326-5822-5823-5833-7630-7814-13513-13527-15416

KIN.0448

Includes: 1 military green handle 2 fixing pins



Handle for models

7630-7726-7745-11413-13513-13527-10826-10840-15416-MUB78

KIN.0424

Includes: 1 military green handle 2 fixing pins



Polyurethane o-ring seal for models 13513 and 13527

KIN.0856

Includes:
1 o-ring



Handle for models

7630-7726-7745-11413-13513-13527-10826-10840-15416-MUB78

KIN.0423

Includes: 1 orange handle 2 fixing pins