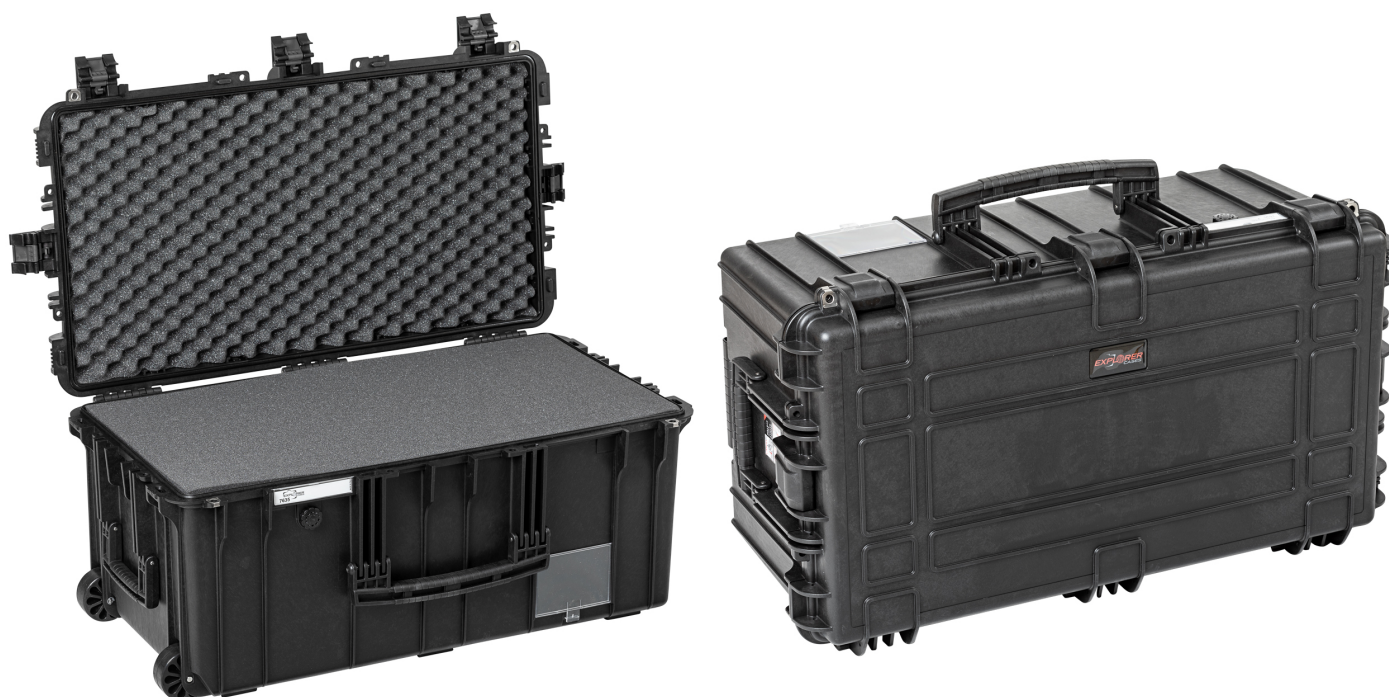


Mod. 7635HL.B

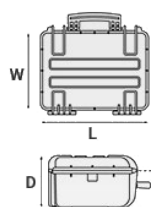
7635HL- EXPLORER CASES, COPOLYMER POLYPROPYLENE ULTRALIGHT WATERPROOF CASE

HL SERIES

Large cases IP67 certified. Two man lift side handles and retractable handle. Self-oiling free running wheels. Four colors available and two internal standard configurations.



METRIC MM-KG-C°



INTERNAL DIMENSIONS

L LENGTH	763 mm
W WIDTH	399 mm
D DEPTH	350 mm
LID	50 mm
BASE	300 mm

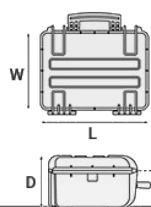
EXTERNAL DIMENSIONS

L LENGTH	832 mm
W WIDTH	466 mm
D DEPTH	369 mm

OTHER DATA

WEIGHT EMPTY	9.4 Kg
WEIGHT WITH FOAM	11.8 Kg
WEIGHT WITH CUSTOM FOAM	Kg
VOLUME	106.6 lt
BUOYANCY	82.2 Kg/max
OPERATING TEMPERATURE	°C min -33 / max 90

IMPERIAL IN-LBS-F°



INTERNAL DIMENSIONS

L LENGTH	30 1/16 in
W WIDTH	15 11/16 in
D DEPTH	13 3/4 in
LID	1 15/16 in
BASE	11 13/16 in

EXTERNAL DIMENSIONS

L LENGTH	32 3/4 in
W WIDTH	18 3/8 in
D DEPTH	14 1/2 in

OTHER DATA

WEIGHT EMPTY	20.72 lbs
WEIGHT WITH FOAM	26.01 lbs
WEIGHT WITH CUSTOM FOAM	lbs
VOLUME	28.16 gal
BUOYANCY	181.22 lbs/max

OPERATING
TEMPERATURE

°F min -27.4 / max
194

FEATURES



SELF OILING FREE RUNNING WHEELS



CORROSION PROOF METAL HINGES WITH LID STAY FEATURES



INTERNAL SLOTS

Internal slots for optional panel mounting brackets or panel mounting rings



LARGE FRONT HANDLE



JAM FREE LATCHES WITH EASY-OPENING MECHANISM

(from model 3818 on)



SEALING O-RING

(Art. NEOSEAL + nr. art.)



PVC WATERPROOF I. D. REMOVABLE LABEL

(Art. LABELCOVER + nr. art.)

ACCESSORIES

CONVOLUTED FOAM SET FOR CASE 7626 AND 7635

LIDFOAM.76CS
(includes 2 pcs.)



FOAM SET FOR CASE 7635

FOAM.7635

Layers of pre cubed foam for the bottom and convoluted foam for the lid. The pre-cubed foam allows the user to tailor the insert to their own individual requirement. The convoluted foam in the lid helps to firmly keep the stored equipment when the case is closed. Available for 7635 model. Color: dark grey. [DOWNLOAD PDF](#)



PROTECTIVE SLEEVE FOR PC 15"-15.6"

TOP ENVELOPE 15

Protective padded notebook sleeve. Protects the laptop from shocks and scratches.



PROTECTIVE SLEEVE FOR PC 13"-13.3"

TOP ENVELOPE 13

Protective padded notebook sleeve. Protects the laptop from shocks and scratches.





PATENTED HEAVY DUTY BRASS PADLOCK WITH KEYS

EXPL PADLOCK

Designed to fit snug to the Explorer case mould so as not to swing out



PATENTED COMBINATION PADLOCK

EXPL COMBILOCK

Designed to fit snug to the Explorer case mould so as not to swing out



BLIND INSERT

KIT.EXPL.PLUGS

Kit includes 6 pcs. Whenever the slots are not going to be used for in-built applications, those can be closed by blind inserts that will give the case a better and finished interior look.



TSA APPROVED PADLOCK WITH COMBINATION

EXPL TSA.DIGILOCK

The new TSA approved padlocks allow tsa® airport security agents to open the case without destroying the lock. TSA agents are trained to recognize the travel sentry certified logo and should not break the case lock.



METAL BRACKET

KIT SUPP.EXPL.

Kit includes 6 pcs. All models (except for the 1908) are internally equipped with specific slots, to apply the optional metal or plastic brackets which provide either a panel's fixing points or a fix mechanical joint inside the case, to build more complete applications. This way the case becomes a real workstation, rather than just a carrying container. As the panel mounting brackets are mechanically fixed by screws, they can be removed when necessary. The dedicated screws allow the case to remain waterproof, and help the panels to be removed easily and quickly



PLASTIC BRACKET

KIT SUPP.PLAST.

Kit includes 6 pcs. All models (except for the 1908) are internally equipped with specific slots, to apply the optional metal or plastic brackets which provide either a panel's fixing points or a fix mechanical joint inside the case, to build more complete applications. This way the case becomes a real workstation, rather than just a carrying container. As the panel mounting brackets are mechanically fixed by screws, they can be removed when necessary. The dedicated screws allow the case to remain waterproof, and help the panels to be removed easily and quickly

SPARE PARTS

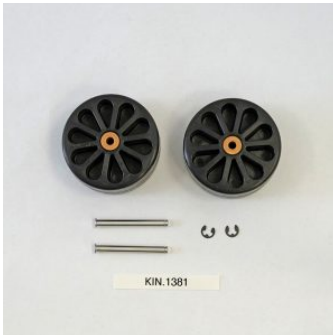


Metal clips for mod.

3005-4209-16-4412-19-4820-5140-5218-21-5325-26-5822-23-33-762
6-30-35-41-7726-45-7814-9413-33-10826-40-11413-13513-27-15416

KIN.1214

Includes: 4 metal reinforcements



Wheels for models 7626-7635-9433

KIN.1381

Includes: 2 wheels with bearings 2 snap rings (Seeger) 2 fixing pins



Polyurethane o-ring seal for models 7626-7635

KIN.1380

Includes: 1 o-ring



Red trigger pull release latch for models 7626-7635

KIN.1115

Includes: 1 desert tan latch 1 fixing pin



Red trigger pull release latch for models 7626-7635

KIN.1114

Includes: 1 military green latch 1 fixing pin



Red trigger pull release latch for models 7626-7635

KIN.1113

Includes: 1 black latch 1 fixing pin



Side handle for mod.

5822-5823-5833-7626-7630-7635-7641-7726-7745-13513-13527

KIN.1370

Includes: 1 orange handle 2 fixing pins



Side handle for mod.

5822-5823-5833-7626-7630-7635-7641-7726-7745-13513-13527

KIN.1368

Includes: 1 military green handle 2 fixing pins

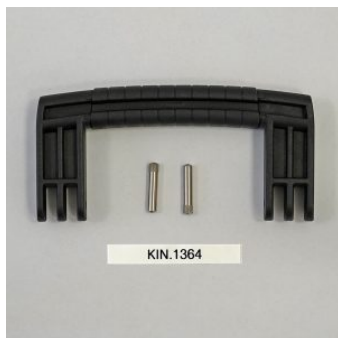


Side handle for mod.

5822-5823-5833-7626-7630-7635-7641-7726-7745-13513-13527

KIN.1366

Includes: 1 desert tan handle 2 fixing pins



Side handle for mod.

5822-5823-5833-7626-7630-7635-7641-7726-7745-13513-13527

KIN.1364

Includes: 1 black handle 2 fixing pins



Extractable handle for models 7626-7635

KIN.1363

Includes: 1 military green extractable handle 10 fixing screws



Extractable handle for models 7626-7635

KIN.1362

Includes: 1 desert tan extractable handle 10 fixing screws

Extractable handle for models 7626-7635

KIN.1361

Includes: 1 black extractable handle 10 fixing screws



Extractable handle for models 7626-7635

KIN.1360

Includes: 1 orange extractable handle 10 fixing screws



Rubber coated handle for models 7626-7635-9433

KIN.1371

Includes: 1 orange handle 2 fixing pins



Rubber coated handle for models 7626-7635-9433

KIN.1369

Includes: 1 military green handle 2 fixing pins





Rubber coated handle for models 7626-7635-9433

KIN.1367

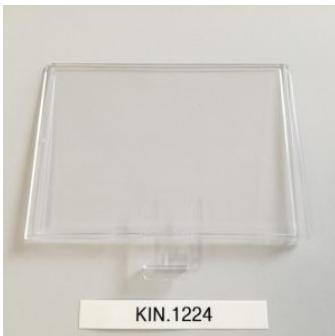
Includes: 1 desert tan handle 2 fixing pins



Rubber coated handle for models 7626-7635-9433

KIN.1365

Includes: 1 black handle 2 fixing pins



**transparent polycarbonate shipping label holders for mod.
5218-5221-7626-7635-7726-7745-9433**

KIN.1224

Includes: 1 transparent label holder



Transparent PC name tag for mod.

**4209-4216-4412-4419-4820-5218-5221-5325-5326-5822-5823-5833-
7626-7630-7635-7641-7726-7745-7814-9413-9433-10826-10840-114
13-13513-13527-15416-MUB65**

KIN.0969

Includes: 1 transparent name tag holder

