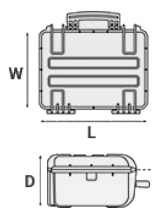


**Mod. 9413.B E****COPOLYMER POLYPROPYLENE WATERPROOF CASE**

Short gun cases designed to accommodate M4 or similar size rifles and accessories. Double action latches and PU gasket. Wheels with bearings. Lifetime warranty.



METRIC MM-KG-C°

**INTERNAL DIMENSIONS**

<b>L LENGTH</b>	939 mm
<b>W WIDTH</b>	352 mm
<b>D DEPTH</b>	137 mm
<b>LID</b>	43 mm
<b>BASE</b>	94 mm

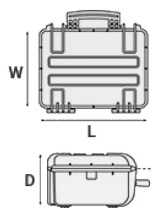
**EXTERNAL DIMENSIONS**

<b>L LENGTH</b>	989 mm
<b>W WIDTH</b>	415 mm
<b>D DEPTH</b>	157 mm

**OTHER DATA**

<b>WEIGHT EMPTY</b>	6.70 Kg
<b>WEIGHT WITH FOAM</b>	7.80 Kg
<b>WEIGHT WITH CUSTOM FOAM</b>	Kg
<b>VOLUME</b>	45.30 lt
<b>BUOYANCY</b>	27.90 Kg/max
<b>OPERATING TEMPERATURE</b>	°C min -33 / max +90

IMPERIAL IN-LBS-F°

**INTERNAL DIMENSIONS**

<b>L LENGTH</b>	36 15/16 in
<b>W WIDTH</b>	13 7/8 in
<b>D DEPTH</b>	5 3/8 in
<b>LID</b>	1 11/16 in
<b>BASE</b>	3 11/16 in

**EXTERNAL DIMENSIONS**

<b>L LENGTH</b>	38 15/16 in
<b>W WIDTH</b>	16 5/16 in
<b>D DEPTH</b>	6 3/16 in

**OTHER DATA**

<b>WEIGHT EMPTY</b>	14.77 lbs
<b>WEIGHT WITH FOAM</b>	17.19 lbs
<b>WEIGHT WITH CUSTOM FOAM</b>	lbs
<b>VOLUME</b>	11.96 gal
<b>BUOYANCY</b>	61.50 lbs/max
<b>OPERATING TEMPERATURE</b>	°F min -27.4 / max +194

## FEATURES



### **AUTOMATIC VALVE**

Automatic pressure release valve.



### **CORROSION PROOF METAL HINGES WITH LID STAY FEATURES**



### **INTERNAL SLOTS**

Internal slots for optional panel mounting brackets or panel mounting rings



### **LARGE FRONT HANDLE**



### **JAM FREE LATCHES WITH EASY-OPENING MECHANISM**

(from model 3818 on)



### **SEALING O-RING**

(Art. NEOSEAL + nr. art.)



### **PVC WATERPROOF I. D. REMOVABLE LABEL**

(Art. LABELCOVER + nr. art.)



### **OPTIONAL SHOULDER STRAP (universal)**

(art. SHOULDERKIT.U)



**TWO MAN LIFT SIDE HANDLES**



**WHEELS WITH BEARINGS**

## ACCESSORIES



### **PADDED GUN BAG FOR CASE 9413**

GSLEEVE 94

Designed to secure your valuable rifle and accessories, the new G Sleeve bags provide protection in a highly mobile condition. A lightweight ruggedized 600D polyester outer fabric protects from humidity, while a padded interior keeps your rifle well protected. The internal rifle retention straps and the neoprene side flaps keep your firearm properly fixed.



### **PROTECTIVE SLEEVE FOR PC 15"-15.6"**

TOP ENVELOPE 15

Protective padded notebook sleeve. Protects the laptop from shocks and scratches.



### **PROTECTIVE SLEEVE FOR PC 13"-13.3"**

TOP ENVELOPE 13

Protective padded notebook sleeve. Protects the laptop from shocks and scratches.

**HBAG94**



**Fits into 9413 case - x 2 pcs.**

### **PADDED TWIN GUN BAG FOR CASE 9413**

HBAG94

The new hunting gun sleeves are the latest accessories to carry and securely protect two guns inside our hard waterproof cases. These bags couple and lock together, or can be used also independently to carry the gun on the field.



## ADJUSTABLE SHOULDER KIT

SHOULDERKIT.U

The kit is composed by: shoulder strap with plastic endings, 4 threaded knots, 2 metal plates. (min. extension 106 cm, max. extension 201 cm). The strap comes with the Explorer logo. Suitable for models: 1908, 1913, 2209, 2214, 3005, 4412, 4419, 5117, 9413, 11413 and 13513.



## HANDY BACKPACK CARRYING SYSTEM FOR GUNBAGS

BACKPACK KIT

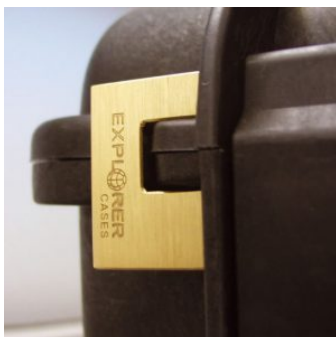
Practical and easy to fix kit to turn the gunbags into backpacks to safely transport your rifles. The detachable, padded shoulder straps, clip right in the back of the gunbags D-rings. The ergonomic straps are designed to be fully adjustable in length. It works on GUNBAG 94, GUNBAG 114, GUNBAG 135 and GUNBAG 108. Color: black.



## PADDED GUN BAG FOR CASES 9413-9433

GBAG 94

Padded gunbag to protect long guns. Inclusive of a number of features to secure rifles and shotguns together with necessary accessories and ammunitions. GBAG 94 is designed to perfectly fit into Explorer Cases models 9413-9433 (up 3 pcs). The gunbag is built with durable, 600D tear resistant polyester and robust zipper with lockable Velcro pull zipper for the main compartment. The main compartment features two neoprene hook-and-loop side flaps and adjustable straps to secure firearms. The front central compartment is equipped with adjustable interior straps to secure rifle position. The two side smaller pouches are designed to storage accessories and ammunitions. Both the main and front compartments are padded on all sides to protect and transport critical gear. This long gun bag features top and bottom compression straps and come with a removable shoulder strap. Personal ID window on the backside and front removable hook-and-loop screen-printable band. The gunbag can easily become a backpack by fixing the BACKPACK KIT in its rear side (see BACKPACK KIT accessory in BACKPACK SYSTEMS section for more details).



## PATENTED HEAVY DUTY BRASS PADLOCK WITH KEYS

EXPL PADLOCK

Designed to fit snug to the Explorer case mould so as not to swing out



### **DIGITAL LOCK FOR CASES 9413, 9433, 11413, 13513, 13527, 15416, 10826 AND 10840**

KIT.DL

Kit includes 2 pcs.



### **PATENTED COMBINATION PADLOCK**

EXPL COMBILOCK

Designed to fit snug to the Explorer case mould so as not to swing out



### **BLIND INSERT**

KIT.EXPL.PLUGS

Kit includes 6 pcs. Whenever the slots are not going to be used for in-built applications, those can be closed by blind inserts that will give the case a better and finished interior look.



### **TSA APPROVED PADLOCK WITH COMBINATION**

EXPL TSA.DIGILOCK

The new TSA approved padlocks allow tsa® airport security agents to open the case without destroying the lock. TSA agents are trained to recognize the travel sentry certified logo and should not break the case lock.





### METAL BRACKET

KIT SUPP.EXPL.

Kit includes 6 pcs. All models (except for the 1908) are internally equipped with specific slots, to apply the optional metal or plastic brackets which provide either a panel's fixing points or a fix mechanical joint inside the case, to build more complete applications. This way the case becomes a real workstation, rather than just a carrying container. As the panel mounting brackets are mechanically fixed by screws, they can be removed when necessary. The dedicated screws allow the case to remain waterproof, and help the panels to be removed easily and quickly



### PLASTIC BRACKET

KIT SUPP.PLAST.

Kit includes 6 pcs. All models (except for the 1908) are internally equipped with specific slots, to apply the optional metal or plastic brackets which provide either a panel's fixing points or a fix mechanical joint inside the case, to build more complete applications. This way the case becomes a real workstation, rather than just a carrying container. As the panel mounting brackets are mechanically fixed by screws, they can be removed when necessary. The dedicated screws allow the case to remain waterproof, and help the panels to be removed easily and quickly



### CONVOLUTED FOAM SET FOR CASE 9413-9433

LIDFOAM.94

(includes 2 pcs.)



### FOAM SET FOR CASE 9413

FOAM.9413

Layers of pre cubed foam for the bottom and convoluted foam for the lid. The pre-cubed foam allows the user to tailor the insert to their own individual requirement. The convoluted foam in the lid helps to firmly keep the stored equipment when the case is closed. Available for 9413 model. Color: dark grey. [DOWNLOAD PDF](#)





## SPARE PARTS



### **Metal clips for mod.**

**3005-4209-16-4412-19-4820-5140-5218-21-5325-26-5822-23-33-762  
6-30-35-41-7726-45-7814-9413-33-10826-40-11413-13513-27-15416**

KIN.1214

Includes: 4 metal reinforcements



### **Grey trigger pull release latch for models**

**7814-9413-9433-11413-13513-13527**

KIN.1283

Includes: 1 black latch 1 fixing pin



### **Rubber coated handle for models 7626-7635-9433**

KIN.1371

Includes: 1 orange handle 2 fixing pins



### **Rubber coated handle for models 7626-7635-9433**

KIN.1369

Includes: 1 military green handle 2 fixing pins



**Rubber coated handle for models 7626-7635-9433**

KIN.1367

Includes: 1 desert tan handle 2 fixing pins



**Rubber coated handle for models 7626-7635-9433**

KIN.1365

Includes: 1 black handle 2 fixing pins



**Handle for mod. 9413 (front handle) and mod. 10826-10840 (lateral short handle)**

KIN.1379

Includes: 1 desert tan handle 2 fixing pins



**Transparent PC name tag for mod.**

**4209-4216-4412-4419-4820-5218-5221-5325-5326-5822-5823-5833-7626-7630-7635-7641-7726-7745-7814-9413-9433-10826-10840-11413-13513-13527-15416-MUB65**

KIN.0969

Includes: 1 transparent name tag holder



**Wheels for models 9413-11413-13513**

KIN.0545

Includes: 2 wheels with bearings 2 snap rings (Seeger) 2 fixing pins



**Side handle for models 9413-11413**

KIN.0419

Includes: 1 black handle 2 fixing pins



**Side handle for models 9413-11413**

KIN.0428

Includes: 1 military green handle 2 fixing pins



**Handle (mod. 9413 front handle - mod. 10826-10840 lateral short handle)**

KIN.0416

Includes: 1 military green handle 2 fixing pins



**Handle (mod. 9413 front handle - mod. 10826-10840 lateral short handle)**

KIN.0417

Includes: 1 black handle 2 fixing pins



**Side handle for models 9413-11413**

KIN.0882

Includes:  
1 sand handle  
2 fixing pins



**Polyurethane o-ring seal for models 9413-9433**

KIN.0865

Includes: 1 o-ring